

Heat Recovery Units

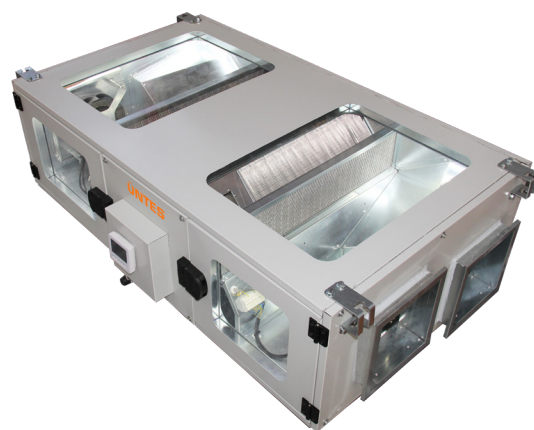
- ThermoFresh Plus Series



ÜNTES®

ThermoFresh Plus Series

- Compatible with Latest Ecodesign Regulation Requirements
- Counter-Flow Heat Recovery System up to 90% Thermal Efficiency
- Proportional Flow Control Powered by Highly Efficient EC Plug Fans with Low Sound Level
- Minimum Thermal Leak Achieved by Double Skinned Casing Structure
- Air Tight Service Doors by Virtue of Balloon Gasket
- 8 Different Sizes up to 3600 m³/h Airflow Rate
- High Indoor Air Quality Resulted by Filtration Classes from ISO ePM10 \geq 50% (M5) up to ISO ePM1 \geq 80% (F9)
- Minimum Energy Consumption Thanks to Advanced Automation Control System
- Remote Access to Unit with Wi-Fi Technology and Unit Control by Mobile Application
- Flexible 7-Day Weekly Program
- User Friendly Room Control Unit



Technical Features

- Structure and Panel: 40 mm panel thickness double skinned casing without Al/Steel profile.
- Corrosion resistant pre-painted galvanized sheet in outer skin.
- EPDM leak proof gaskets providing full air tightness on the panels and balloon type gasket in service doors.
- 40 mm thick A1 fire safety class rock wool placed into sandwich panels with the same thickness in order to reduce sound level and thermal leak.
- Heat Exchanger: Aluminum counter-flow hexagonal plate heat exchanger up to 90% efficiency.
- Fan: Highly efficient EC plug fans with aerodynamic backward curved blades in order to guarantee low sound level.
- Filter: High air quality thanks to ISO ePM10 \geq 50% (M5) up to ISO ePM1 \geq 80% (F9) filter classes. Long-life filters with 25 mm thickness in first filtration stage and 35 mm thickness in second stage filtration.
- Filter Clogging Monitoring in both supply and exhaust airside by differential pressure switches.
- Drain: Embedded stainless steel drain pan into panel fully covered by insulation material.
- Bypass: Free cooling/heating providing by bypass damper controlled by ON/OFF actuator.
- Maintenance: Easy maintenance thanks to hinged service doors and easy access to fans, filters and PHE thanks to sliding system.
- Power Supply and Control: Plug-and-play unit due to factory fitted controller able to communicate with Building Management System (BMS) via Modbus RTU communication protocol.

Options

- Remote access to unit with wi-fi technology and unit control by mobile application.
- First or second stage fine filters at supply air side.
- Low or high capacity electrical pre-heater.
- Low or medium capacity electrical post-heater or 3-stage high capacity electrical post-heater.
- Hot/chilled water coils compatible with district heating/cooling applications.
- Different capacity alternatives for direct expansion coils.
- Air quality control with duct type CO₂ sensor.
- Proportional heating/cooling capacity control with 2-way or 3-way valve kits.
- IP67 electrical panel.
- Fire detection with smoke detector or digital input for external fire alarm.
- Fresh and/or exhaust air damper controlled by ON/OFF actuator.
- Advanced automation system for complex applications (MAXI Controller).
- Supply or return air temperature control.
- Circular Duct Connection Adaptor



UTFP Series		040-330							
		040	060	080	100	150	205	260	330
Technical Specifications									
Nominal Airflow Rate	m³/h	400	600	800	1000	1500	2050	2600	3300
Nominal External Static Pressure	Pa	75	75	100	100	100	125	125	150
Power Supply	V/Ph/Hz	220-240/1/50							
❶ Exhaust Fan Motor Absorbed Power	W	59	98	125	164	345	341	476	691
❶ Supply Fan Motor Absorbed Power	W	57	96	119	158	336	331	466	677
❷ SFP _{int}	W/(m³/s)	570	611,2	578,6	576,1	844,8	586,2	589,8	628,5
❷ SFP _{int} Limit	W/(m³/s)	1190,3	1182	1116,7	1120,3	1162,5	1145,6	1140,7	1090,5
Fresh Air Filter Class	%	ISO ePM10≥50% (M5)							
Exhaust Air Filter Class	%	ISO ePM10≥50% (M5)							
Counter-Flow Heat Recovery									
❸ Winter Efficiency	%	88,5	88,5	87,4	87,6	88,6	88,7	89,2	88,6
❹ Summer Efficiency	%	82,8	82,8	80,9	81,3	83,4	83,6	84,2	83,5
❺ Efficiency	%	82,9	82,9	81	81,4	83,5	83,7	84,3	83,6
Sound									
❻ Sound Pressure Level	dB(A)	35	43	35	41	52	46	51	53
Dimensions									
Height	mm	397	397	479	479	618	618	618	759
Width	mm	1346	1346	1638	1638	1937	1937	1937	2219
Lenght	mm	721	845	915	965	1015	1290	1720	1780
❼ Weight	kg	92,3	104,2	137,3	144,5	193,9	233,1	291	368,3

❶ Data is given at nominal airflow rate and external static pressure.

❷ Data in accordance with EU 1253/2014 regulation at nominal airflow rate and nominal external static pressure.

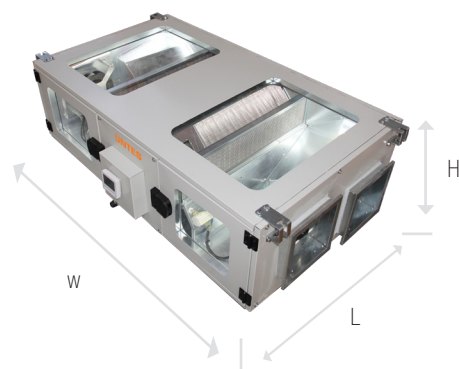
❸ Winter conditions: Outdoor air temperature -5°C, 80% RH and indoor air temperature 22°C, 50% RH.

❹ Summer conditions: Outdoor air temperature 35°C, 40% RH and indoor air temperature 24°C, 50% RH.

❺ Values are referred to EN 308 standard at balanced airflow rates.

❻ Sound pressure level at 1 m distance in free field.

❼ Weight of the unit without accessories.



ÜNTES®

Export Sales Office

Address: 53. Cadde 1450. Sokak Ulusoy
Plaza No: 9/50 Cukurambar, Ankara, Turkey
Email: export@untes.com.tr
T+90 (312) 287 91 00 F+90 (312) 284 91 00

Manufacturing Plant-1

Air Handling & Ventilations Systems,
Fan Coil Systems
Packaged Air Conditioning Systems
Address: Istanbul Yolu 37.km
Kahramankazan, Ankara, Turkey

Manufacturing Plant-2

Water Chiller and Heat Pumps
Address: Istanbul Yolu 24.km Saraykoy, Ankara

www.untes.com



untesklima

Untes Heating Air Conditioner Inc. reserves the right to make changes in the products, technical data, figures, designs and materials of the products in the catalog without any notice or information. All contents are copyrighted by Untes.