

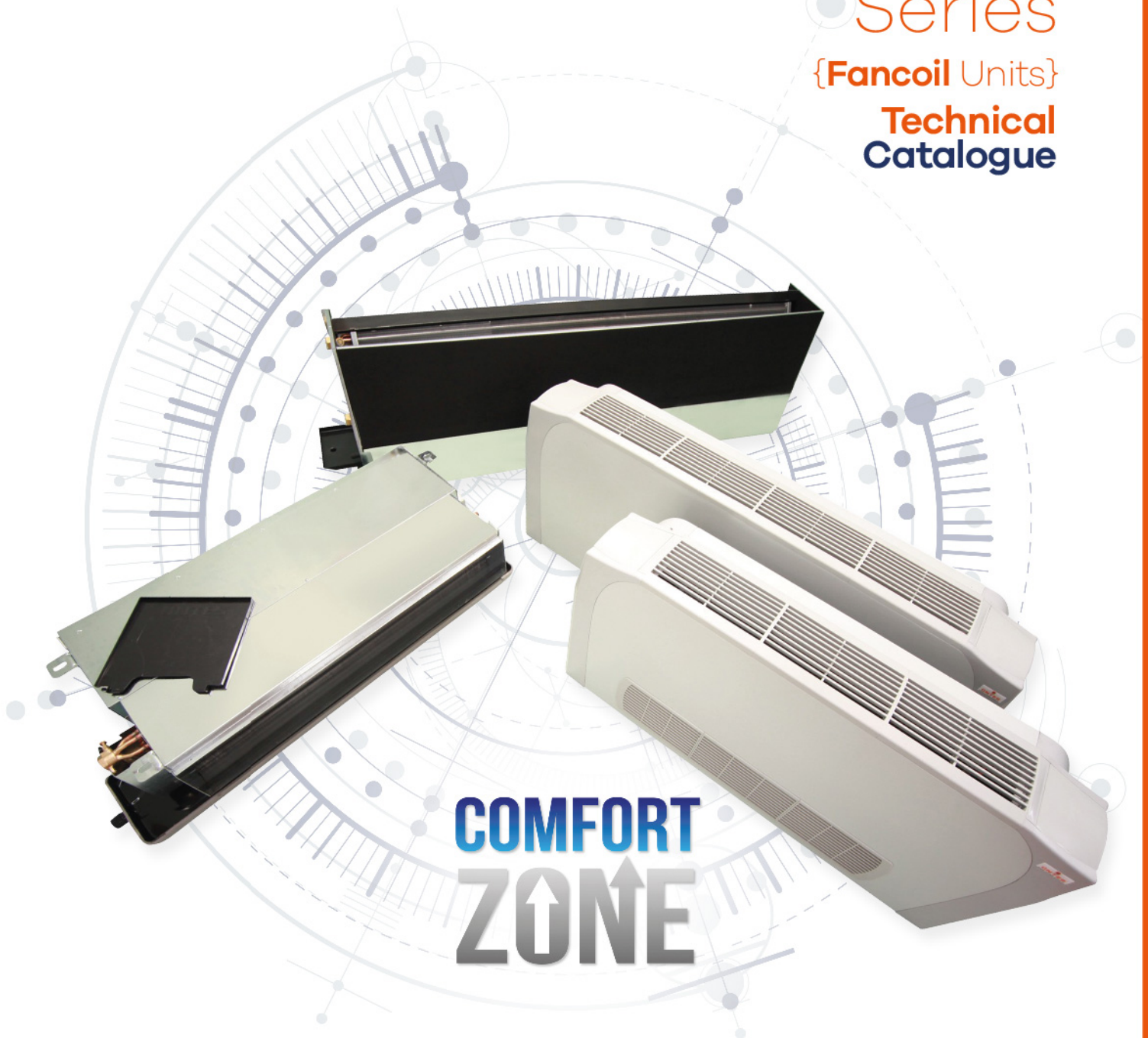
ÜNTES®
Building Trust since 1968

UNFC

Series

{Fancoil Units}

**Technical
Catalogue**



**COMFORT
ZONE**



CONTENTS

SF.2	—	01	INTRODUCTION
SF.3	—	02	PRODUCT KEY
SF.4	—	03	GENERAL FEATURES
	/	04	WORKING LIMITS
SF.5	—	05	OPTIONS
SF.6	—	06	THREE-WAY VALVE
SF.7/18	—	07	CAPACITY TABLES
SF.22/26	—	08	DIMENSIONS
SF.27	—	09	DIRECTION INFORMATION

01

INTRODUCTION

1.1 FANCOIL — **UNFC** series fancoils, manufactured by Üntes, are your most ideal air treatment assistants for school, hospital, mass housing, cinema, shopping center, warehouses, offices and big workplaces thanks to their ergonomic designs and conforming to the desired technical and dimensional sizes. They also suit up all spaces thanks to their decorative special design.

1.2 GENERAL CONSTRUCTIONAL FEATURES — Internal casing of **UNFC** units are made of Galvanized metal sheet, having the high corrosion resistance. The metal sheet thicknesses are optimized according to the strength analyses and the maximum strength is obtained in the minimum weight. As they adapt to all locations with stylish external casing design, they maintain the durability with ABS material for years. Their accessories are made of plastic alloys durable against the water and sunlight.

1.3 SIZES — There are 12 different size definitions for each model of **UNFC** units. It may respond to the different flow rate needs from 185 m³/h to 2.145 m³/h among these definitions. The wide range of capacity may be obtained with the different fan velocities and coil combinations available in these sizes.

1.4 FILTERS — The tailor-made mesh filters are used in the **UNFC** units. The filters, which Üntes holds the design and production rights, maintain the wash ability feature through the materials for a long time and thanks to this, they don't lose their user- and eco-friendly features.

1.5 HEATING COOLING — There are 2 types of main coil in **UNFC** unit; spray type heating and spray type cooling. They may be produced with 2 pipes or 4 pipes. These coils have the copper pipe/aluminum fin and also have the brass collector with special drainage plug. The coils pass 24 bars pressure tests. There are extended drip components against the perspiration and drips from the valve connections.

1.6 FANS — The radial fans, which are balanced statically and dynamically, frequently forward curved double suction with higher efficiency, are used in the **UNFC** units. The maximum noise insulation is obtained thanks to the special insulation materials which are placed onto the internal casing.

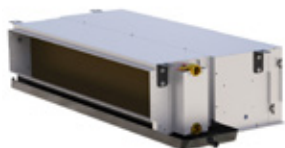
02 PRODUCT KEY

The product key of UNFC units is as follows.

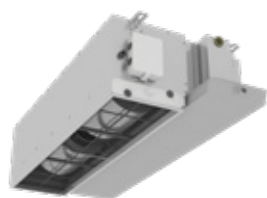
A sample product key;

Series	Type	Version	Model	Connection
UNFC	GTT: Ceiling Concealed Type	2Y: 2-Pipe Up to 60 Pa 4Y: 4-Pipe Up to 60 Pa 2M: 2-Pipe with EC Motor up to 70 Pa 4M: 4-Pipe with EC Motor up to 70 Pa	015~110	L: Left Connection R: Right Connection
	GTA: Ceiling Concealed Type			
	GBT: Ceiling Concealed Type (District Cooling)			
	GBA: Ceiling Concealed Type (District Cooling)			
	KTP: Cabinet Ceiling Type	2B: 2 Pipe 4B: 4 Pipe 2E: 2 Pipe with EC Motor 4E: 4 Pipe with EC Motor		
	KTT: Cabinet Ceiling Type			
	KDT: Cabinet Floor Type			
	KYT: Cabinet Floor Type			
	GDT: Floor Type without Cabinet			

The meaning of SERIAL names according to the place of use of UNFC units is as follows.



GTT-GBT
Ceiling concealed type,
rear inlet and front supply



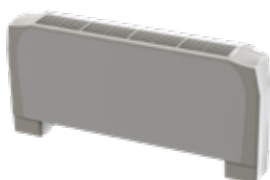
GTA-GBA
Ceiling concealed type,
bottom inlet and front supply



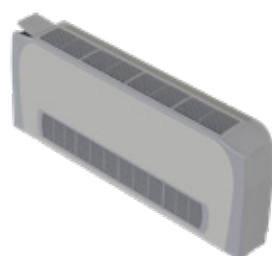
KTP
Cabinet ceiling type,
bottom inlet and front supply



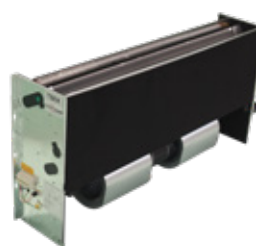
KTT
Cabinet ceiling type, rear
inlet and front supply



KDT
Cabinet floor type, bottom
inlet and top supply
(Feet are optional)



KYT
Cabinet floor type, front inlet
and top supply



GDT
Floor type without cabinet,
bottom inlet and top supply

*GBT and GBA series are suitable for district cooling of GTT and GTA series.

03 GENERAL FEATURES

- 3.0** — The metal sheets of internal casing used in the units are high quality galvanized steel sheet and there is a composite shell made of ABS and painted metal sheet in the cabinet models. The standard color value is RAL9002 in the cabinet models. The coils of unit are the high efficiency copper pipe aluminum fin coils.

The fans are located inside of unit and used to direct the conditioned air which the user needs to the location. It functions by fully using the internal air. System is designed to produce and maintain the determined temperature values.

04 WORKING LIMITS

- 4.0** — These units are designed for indoor use and don't perform the procedures of conditioning the fresh air. They are used to increase the indoor temperatures which are preconditioned to the desired level and to maintain them at that level. The table showing the working limits based on this information is given below.

Cooling	Internal Air		Heating	Internal Air	
	DB [°C]	RH [%]		DB [°C]	RH [%]
Minimum	20	40	Minimum	10	-
Mean	27	47	Mean	20	-
Maximum	30	60	Maximum	30	-

05 OPTIONS

The images of options, which are offered, are as follows;

UTH 0101 / 0111-A0



- Choice of Three Fan Speeds
- Fancoil On/Off
- Summer/Winter Selection
- Room Thermostat
- Mounting on Surface
- Touch Keypad
- Valve Control for 2 and 4 Pipe
- Hotel Card/Window Switch
- Weekly Programming
- Display Backlight
- Modbus RTU (UTH0110-A0)
- Remote Control(UTH0101-A0)
- Modbus RTU+Remote Control (UTH0111-A0)

UTH 0101 / 0111-E0 (EC)



- EC Motor Control
- Fancoil On/Off
- Summer/Winter Selection
- Room Thermostat
- Mounting on Surface
- Touch Keypad
- Valve Control for 2 and 4 Pipe
- Hotel Card/Window Switch
- Weekly Programming
- Display Backlight
- Modbus RTU (optional)
- Remote Control suitable with UTH9100-00

UTH9100-00 *



- Mode Selection Key : Hot, Cold, Ventilation
 - Up and Down Keys: Temperatures
 - Fan Speed Key: High, Medium, Low
 - Sleep Mode Key
 - Timer Key
 - Super Key: Enter High Speed State
 - Power Key
- * with UTH 0101 / 0111 models

UOT



- 3-speed fan control
- Fan coil On/Off
- Heating or Cooling mode
- Summer/ Winter operation selector
- Valve control for 2 pipes
- Valve control for 4 pipes (RAB31)

RDF 510 - 530



- 3-speed fan control
- Fan coil On/Off
- Heating or Cooling mode
- Summer/Winter operation selector
- Timer specification (530 Model)
- Automatic backlighting
- Flush Mounting
- Valve Control 2 Pipe (510 Model)
- Valve Control 4 pipe (530 Model)

RDF 800



- 3-speed fan control
- Touch screen
- Heating and cooling mode at the same time
- BMS (Building Management System)
- Fan coil On/Off
- Summer/ Winter operation selector
- Operation timer
- Automatic backlighting
- Flush Mounting

CUT 2/4



- Choice of Three Fan Speeds
- Fancoil On/Off
- Summer/Winter/Auto Mode Selection
- Room Thermostat
- Touch Keypad
- Valve Control for 2 and 4 Pipe
- Weekly Programming
- Display Backlight
- Modbus RTU (optional)
- External Temperature Sensor

CUT 2/4 (EC)



- EC Motor Control
- Fancoil On/Off
- Summer/Winter/Auto Mode Selection
- Room Thermostat
- Touch Keypad
- Valve Control for 2 and 4 Pipe
- Weekly Programming
- Display Backlight
- Modbus RTU (optional)
- External Temperature Sensor

VM: 2 & 3-way valve options



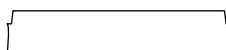
2 and 3- way valves are used for the purpose of thermostatic fluid control for the coils and are supplied loose or factory fitted. 3-way valves are available with 4-port option for the installation convenience.

APK: Rear cover



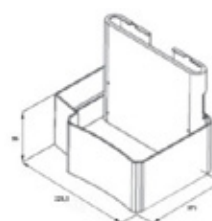
Used for covering the back of units in KDT and KYT types.

ALK: Lower cover



Used for covering the bottom of unit in KTP types.

AYK: Foot



Used for installing the unit to the floor in KDT types.

3VM3SG: 3-way valve installation kit



Used for 2-Pipe systems for GTT - GDT - GTA types.*

4VM3SG: 3-way valve installation kit



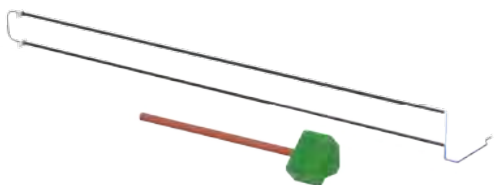
Used for 4-Pipe systems for GTT - GTA types.*

4VM3SK: 3-way valve installation kit



Used for 4-Pipe systems for GDT types.*

* Supplied loose

ELCH: Additional Electrical Heaters

For 2-Pipe systems. (GTT-GTA-GBT-GBA)

- Special design of electrical heaters which are ingrated to coil allows lower surfac temperatures with higher capacities.
- All electrical heaters are made of 304 quality Stainless steel and have halogen free cable connections.
- Option have integrated safety the mostat to prevent high surface temperatures which are resettable and already all cable connections are completed.
- Units have contactors (220-240 Vac,monophasic, 50 hz) and could be con trolled by standard room thermostats.
- All two pipe, ceiling concealed type UNFC series units can be equipped with electrical heaters.

06

THREE-WAY VALVE

6.1. PRESSURE LOSS TABLES FOR ON/OFF TWO- AND THREE-WAY VALVE

MODEL	Description		v	150	200	250	300	400	500	600	700	800	1000	1500	2000
			t/h	l/h	l/h	l/h	l/h	l/h	l/h	l/h	l/h	l/h	l/h	l/h	l/h
2VM 2-15	2 way valve Ø15	kPa	0,4	0,8	1,5	2,5	3,5	6	9	13	16	21			
2VM 2-20	2 way valve Ø20	kPa			0,7	0,9	1,3	2,3	3,5	4,8	6,3	8	12,2		
2VM 2-25	2 way valve Ø25	kPa						0,8	1,3	1,8	2,4	3,2	5	11,5	20
3VM 4-15	3 way 4 port valve Ø15	kPa	0,4	0,4	0,8	1,5	2,5	3,5	6	9	13	16	20,5		
3VM 4-20	3 way 4 port valve Ø20	kPa			0,7	0,9	1,3	2,3	3,5	4,8	6,3	8	12,2		
3VM 4-21	3 way 4 port valve Ø20	kPa						1	1,5	2,2	3	4	6	14	25

6.2.PRESSURE LOSS IN ON/OFF THREE-WAY 4 PORT VALVE AND MOUNTING KIT

MODEL		Coil	Unit	100	200	300	400	500	600	700	800	900	1000	1200	1400	1600	2000
				L/h	L/h	L/h	L/h	L/h	L/h	L/h	L/h	L/h	L/h	L/h	L/h	L/h	L/h
4VM 3S G1	015-020-025	Main coil	kPa	0,4	1,6	3,5	6,1	9,4	13,3	17,8	23,1						
		Add. coil	kPa	0,4	1,6	3,5	6,1	9,4	13,3	17,9	23,1						
4VM 3S G2	030-035-040-050-060	Main coil	kPa		0,7	1,5	2,5	3,8	5,3	7	9	11,1	13,5	18,9			
		Add. coil	kPa	0,4	1,6	3,5	6,1	9,4	13,3	17,9	23,1						
4VM 3S G3	070-080-100-110	Main coil	kPa				1,3	2,1	3	4,1	5,3	6,7	8,3	12	16,4	21,4	33,6
		Add. Coil	kPa		0,8	1,8	3	4,6	6,4	8,6	11	13,7	16,7	23,6			
4VM 3S K1	015-020-025	Main coil	kPa	0,4	1,7	3,7	6,4	9,8	13,9	18,8	24,2						
		Add. coil	kPa	0,4	1,6	3,5	6,1	9,4	13,3	17,9	23,1						
4VM 3S K2	030-035-040-050-060	Main coil	kPa		0,7	1,5	2,5	3,8	5,3	7	8,9	11,1	13,5	18,9			
		Add. coil	kPa	0,4	1,6	3,5	6,1	9,4	13,3	17,9	23,1						
4VM 3S K3	070-080-100-110	Main coil	kPa				1,3	2,1	3	4,1	5,3	6,8	8,4	12	16,4	21,5	33,7
		Add. coil	kPa		0,8	1,6	2,7	4,1	5,8	7,7	9,9	12,3	15	21,1			

07

CAPACITY TABLES

7.1. GTT/GTA TYPE Y SERIES 2 PIPE

UNFC Series	GTT-GTA Types 2 Pipe												
	2Y	15	20	25	30	35	40	50	60	70	80	100	110
Airflow Rate (High)	m³/h	473	449	530	934	880	972	1,023	1189	1396	1626	1958	2288
Airflow Rate (Medium)	m³/h	388	365	410	745	703	777	809	953	1117	1312	1562	1874
Airflow Rate(Low)	m³/h	215	200	228	427	404	492	511	530	682	724	990	1023
Total Cooling Capacity*	kW	1,68	2,49	2,79	3,47	4,59	4,86	5,44	6,55	7,02	8,35	10,09	11,58
Sensible Cooling Capacity*	kW	1,35	1,79	2,01	2,58	3,3	3,51	3,84	4,59	4,99	5,94	7,28	8,31
Heating Capacity**	kW	5,93	7,53	8,6	11,13	13,96	14,92	16,72	19,49	21,36	25,4	30,79	36,0
Coil Water Volume	L	0,75	1,05	1,05	1,06	1,52	1,52	1,75	1,89	2,18	2,26	2,83	3,03
DIMENSIONS													
GTT Unit (WxHxD)	mm	709	709	709	984	984	984	1101	1024	1359	1411	1771	1882
		238	238	238	238	238	238	238	238	238	238	238	238
		478	478	478	478	478	478	478	478	478	478	478	478
GTT With Package (WxHxD)	mm	735	735	735	1015	1015	1015	1150	1240	1455	1455	1790	1915
		260	260	260	260	260	260	260	260	260	260	260	260
		515	515	515	515	515	515	515	515	515	515	515	515
GTA Unit (WxHxD)	mm	709	709	709	984	984	984	1101	1024	1359	1411	1771	1882
		259	259	259	259	259	259	259	259	259	259	259	259
		470	470	470	470	470	470	470	470	470	470	470	470
GTA With Package (WxHxD)	mm	735	709	709	1015	1015	1015	1150	1240	1455	1455	1790	1915
		260	260	260	260	260	260	260	260	260	260	260	260
		515	515	515	515	515	515	515	515	515	515	515	515
FLUID DIRECTION													
Water Flow Rate (Cooling)	L/h	294,6	435,1	488	607,7	800,9	848,2	947,3	1152	1221,8	1458,3	1759,5	2021,4
Water Pressure Drop	kPa	4,6	14,2	18	24,9	20	22,4	33,4	40	29,3	40,4	26,4	36
Water Flow Rate (Heating)	L/h	261,2	332,4	379,4	490,8	616,6	658,7	738,4	860,2	943,6	1120,6	1359,8	1589,4
Water Pressure Drop	kPa	3,1	5,9	7,6	12,4	8,2	9,3	12,8	20	15,2	20,1	13,8	17,4
Sound Pressure Level² (Low/Medium/High)	dB (A)	22/ 34/ 38	26/ 35/ 38	32/ 41/ 44	27/ 40/ 44	29/ 41/ 44	33/ 41/ 45	32/ 40/ 44	33/ 43/ 48	34/ 45/ 47	37/ 47/ 48	35/ 43/ 47	36/ 47/ 49
Two-way valve		2VM 2-15	2VM 2-15	2VM 2-15	2VM 2-20	2VM 2-20	2VM 2-20	2VM 2-20	2VM 2-20	2VM 2-25	2VM 2-25	2VM 2-25	2VM 2-25
Three-way valve		3VM 4-15	3VM 4-15	3VM 4-15	3VM 4-20	3VM 4-20	3VM 4-20	3VM 4-20	3VM 4-20	3VM 4-21	3VM 4-21	3VM 4-21	3VM 4-21
Pipe Connection Inlet/Outlet	inch	3/4											
Pipe Connection Drainage	inch	3/4											
Fan Motor Absorbed Power (Cooling) High/ Medium/ Low Speed	W	43/ 37/ 28	46/ 40/ 31	56/ 48/ 38	79/ 71/ 56	78/ 67/ 55	84/ 78/ 65	89/ 82/ 66	163/ 155/ 123	111/ 102/ 86	152/ 144/ 124	169/ 155/ 126	207/ 192/ 161
Fan Motor Absorbed Power (Heating) High/ Medium/ Low Speed	W	46/ 40/ 31	48/ 43/ 37	59/ 50/ 43	79/ 73/ 62	77/ 75/ 63	88/ 83/ 76	92/ 86/ 75	116/ 115/ 111	118/ 112/ 93	161/ 152/ 134	177/ 165/ 140	221/ 215/ 184
WEIGHTS													
Net/Gross Weights	kg	13,9/ 15,4	14,7/ 16,2	14,8/ 16,3	20,1/ 22,0	21,2/ 23,1	21,3/ 23,2	24,3/ 26,5	25,7/ 27,9	31,8/ 34,4	33,0/ 35,6	40,3/ 43,6	42,4/ 45,7
Control Type		Wall Mounted Room Thermostat (Optional)											
ELECTRIC HEATER OPTION													
Electric Heater Capacity***	kW	0,85	0,85	0,85	1,5	1,5	1,5	2,2	2,2	3,0	3,0	4,0	4,0
Electric Heater Input Current***	A	3,7	3,7	3,7	6,5	6,5	6,5	9,6	9,6	13,0	13,0	17,4	17,4
Electric Heater Number of Stages		1											

- 1) External static pressure 0 Pa. 2Y: 2 pipe Y series.
- 2) Supply side 1 m distance and a direction factor of Q=1

* Values are at high speed, 27 °C DB 50 % RH room conditions and 7/12 °C in/out water temperatures.
** Values are at high speed, 20 °C DB room conditions and 90/70 °C water in/out temperatures.
*** Electric Heater values are based on 0 m altitude and 230 Volt, 50 Hz electrical supply

7.2. GTT/GTA TYPE EC MOTOR 2-PIPE SERIES

UNFC Series	GTT - GTA Types 2 Pipe										
	2M	15	25	30	40	50	60	70	80	100	110
Airflow Rate (Turbo)	m³/h	541	656	1063	1124	1204	1341	1693	1778	2259	2468
Airflow Rate (High)	m³/h	491	591	978	1025	1110	1227	1541	1623	2075	2252
Airflow Rate (Medium)	m³/h	420	505	870	905	993	1079	1371	1427	1826	1981
Airflow Rate (Low)	m³/h	254	303	618	624	734	762	943	996	1291	1377
Airflow Rate (Silent)	m³/h	197	246	516	555	665	687	837	877	1157	1231
Total Cooling Capacity*	kW	2,01	3,45	4,22	5,85	6,69	7,51	9,08	9,59	11,86	13,09
Sensible Cooling Capacity*	kW	1,66	2,54	3,23	4,3	4,8	5,35	6,58	6,92	8,7	9,53
Heating Capacity**	kW	6,76	9,98	12,89	16,89	18,63	20,76	25,77	27,08	35,34	38,65
Coil Water Volume	L	0,75	1,05	1,06	1,52	1,75	1,89	2,18	2,26	2,83	3,03
DIMENSIONS											
GTT Unit (WxHxD)	mm	709	709	984	984	1101	1024	1359	1411	1771	1882
		238	238	238	238	238	238	238	238	238	238
		478	478	478	478	478	478	478	478	478	478
GTT With Package (WxHxD)	mm	735	735	1015	1015	1150	1240	1455	1455	1790	1915
		260	260	260	260	260	260	260	260	260	260
		515	515	515	515	515	515	515	515	515	515
GTA Unit (WxHxD)	mm	709	709	984	984	1101	1024	1359	1411	1771	1882
		259	259	259	259	259	259	259	259	259	259
		470	470	470	470	470	470	470	470	470	470
GTA With Package (WxHxD)	mm	735	709	1015	1015	1150	1240	1455	1455	1790	1915
		260	260	260	260	260	260	260	260	260	260
		515	515	515	515	515	515	515	515	515	515
Water Flow Rate (Cooling)	L/h	350,9	600,8	735,1	1019,7	1164,2	1310,1	1582,1	1671,1	2066,9	2284,1
Water Pressure Drop	kPa	5,8	23,2	30,9	28	39,9	52,8	40,2	45,8	31,9	40,2
Water Flow Rate (Heating)	L/h	298,8	440,8	596,6	746,1	823,1	916,7	1138,7	1196,1	1561,7	1707,3
Water Pressure Drop	kPa	3,4	10,4	15	12,2	16,3	21,1	16,9	19,1	15	18,4
Sound Pressure Level ² (Low/Medium/High)	dB (A)	22/34/38	32/41/44	27/40/44	33/41/45	32/40/44	33/43/48	34/45/47	37/47/48	35/43/47	36/47/49
Two-way valve		2VM 2-15	2VM 2-15	2VM 2-20	2VM 2-20	2VM 2-20	2VM 2-20	2VM 2-25	2VM 2-25	2VM 2-25	2VM 2-25
Three-way valve		3VM 4-15	3VM 4-15	3VM 4-20	3VM 4-20	3VM 4-20	3VM 4-20	3VM 4-21	3VM 4-21	3VM 4-21	3VM 4-21
Pipe Connection Inlet/Outlet	inch	3/4									
Pipe Connection Drainage	inch	3/4									
Fan Motor Absorbed Power (Cooling) Turbo/High/Medium/Low/Silent Speed	W	31/24/ 17/6/5	56/43/ 29/10/7	69/54/ 38/13/9	92/73/ 51/19/12	99/79/ 58/25/18	125/98/ 68/26/17	137/108/ 78/31/22	150/119/ 84/34/23	185/148/ 103/41/27	220/173/ 120/46/29
Fan Motor Absorbed Power (Heating) Turbo/High/Medium/Low/Silent Speed	W	31/24/ 17/6/5	56/43/ 29/10/7	69/54/ 38/13/9	92/73/ 51/19/12	99/79/ 58/25/18	125/98/ 68/26/17	137/108/ 78/31/22	150/119/ 84/34/23	185/148/ 102/41/27	220/173/ 120/46/29
Step Reference Signal - Turbo/High/Medium/Low/Silent	V	10/8/6,5/ 3/2	10/8/6,5/ 3/2	10/8/6,5/ 3/2	10/8/6,5/ 3/2	10/8/6,5/ 3/2	10/8/6,5/ 3/2	10/7,9/6,5/ 3/2	10/8/6,5/ 3/2	10/8/6,5/ 3/2	10/8/6,5/ 3/2
Net/Gross Weights	kg	12,2/13,7	12,9/14,4	19,4/21,3	20,4/22,3	23,1/25,3	24,7/26,9	29,4/32	29,7/32,3	38,3/41,6	40,6/43,9
Control Type		Wall Mounted Room Thermostat (Optional)									
ELECTRIC HEATER OPTION											
Electric Heater Capacity	kW	0,85	0,85	0,85	1,5	1,5	1,5	2,2	2,2	3	4
Electric Heater Input Current	A	3,7	3,7	3,7	6,5	6,5	6,5	9,6	9,6	13	17,4
Electric Heater Number of Stages		1									

- 1) External static pressure 0 Pa. 2M: 2 pipe M series.
- 2) Supply side 1 m distance and a direction factor of Q=1

* Values are at turbo speed; 27 °C DB 50 % RH room conditions and 7/12 °C in/out water temperatures.

** Values are at turbo speed, 20 °C DB room conditions and 90/70 °C water in/out temperatures.

*** Electric Heater values are based on 0 m altitude and 230 Volt, 50 Hz electrical supply

7.3. GTT/GTA TYPE Y SERIES 4 PIPE

UNFC Series	GTT - GTA Types 4 Pipe												
	4Y	15	20	25	30	35	40	50	60	70	80	100	110
Airflow Rate (High)	m³/h	453	431	506	885	835	920	979	1149	1324	1544	1857	2184
Airflow Rate (Medium)	m³/h	369	348	393	708	672	743	780	938	1064	1270	1496	1833
Airflow Rate(Low)	m³/h	204	192	219	408	387	473	493	510	654	693	951	982
Total Cooling Capacity*	kW	1,59	2,5	2,72	3,73	4,57	4,69	5,43	6,53	6,86	7,78	10,16	11,08
Sensible Cooling Capacity*	kW	1,28	1,79	1,96	2,77	3,28	3,38	3,83	4,58	4,87	5,51	7,31	7,94
Additional Heating Capacity**	kW	3,95	4,04	4,43	7,5	7,37	7,74	8,83	10,07	10,86	11,77	16,38	18,17
Coil Water Volume	L	0,75	1,05	1,05	1,06	1,52	1,52	1,75	1,89	2,18	2,26	2,83	3,03
Additional Coil Water Volume	L	0,38	0,38	0,38	0,54	0,54	0,54	0,61	0,66	0,76	0,79	0,98	1,04
DIMENSIONS													
GTT Unit (WxHxD)	mm	709	709	709	984	984	984	1101	1024	1359	1411	1771	1882
		238	238	238	238	238	238	238	238	238	238	238	238
		478	478	478	478	478	478	478	478	478	478	478	478
GTT With Package (WxHxD)	mm	735	735	735	1015	1015	1015	1150	1240	1455	1455	1790	1915
		260	260	260	260	260	260	260	260	260	260	260	260
		515	515	515	515	515	515	515	515	515	515	515	515
GTA Unit (WxHxD)	mm	709	709	709	984	984	984	1101	1024	1359	1411	1771	1882
		259	259	259	259	259	259	259	259	259	259	259	259
		470	470	470	470	470	470	470	470	470	470	470	470
GTA With Package (WxHxD)	mm	735	709	709	1015	1015	1015	1150	1240	1455	1455	1790	1915
		260	260	260	260	260	260	260	260	260	260	260	260
		515	515	515	515	515	515	515	515	515	515	515	515
Water Flow Rate (Cooling)	L/h	279,2	436,4	475,8	653,1	797,7	818,4	946	1141,1	1197,5	1363,5	1772,7	1934,8
Water Pressure Drop	kPa	4,4	13,9	16,9	26,3	19	20,8	30,8	42,8	26,5	35,4	25,5	33,5
Water Flow Rate (Additional Coil)	L/h	173,2	177	193,5	329,1	z	339,9	387,2	440,7	475,7	513,9	717,5	795,1
Water Pressure Drop	kPa	4,7	5	5,9	20,6	19,9	21,7	31,3	42	12,7	12,4	28,1	29,6
Sound Pressure Level ² (Low/Medium/High)	dB (A)	27/37/38	26/35/38	32/41/44	27/40/44	29/41/44	33/41/45	32/40/44	35/43/47	34/41/44	48/47/37	47/43/35	49/44/37
Two-way valve		2VM 2-15/2-15	2VM 2-15/2-15	2VM 2-15/2-15	2VM 2-20/2-15	2VM 2-20/2-15	2VM 2-20/2-15	2VM 2-20/2-15	2VM 2-20/2-15	2VM 2-25/2-20	2VM 2-25/2-20	2VM 2-25/2-20	2VM 2-25/2-20
Three-way valve		4VM 4-15/4-15	4VM 4-15/4-15	4VM 4-15/4-15	4VM 4-20/4-15	4VM 4-20/4-15	4VM 4-20/4-15	4VM 4-20/4-15	4VM 4-20/4-15	4VM 4-21/4-20	4VM 4-21/4-20	4VM 4-21/4-20	4VM 4-21/4-20
Coil In/Out Diameter (Cooling Coil)	inch	3/4											
Coil In/Out Diameter (Additional Heating Coil)	inch	1/2											
Drain Pipe Diameter	inch	3/4											
Fan Motor Absorbed Power (Cooling) High/Medium/Low Speed	W	43/ 36/31	42/ 36/29	54/ 47/41	75/ 72/58	80/ 73/65	82/ 76/67	85/ 80/69	114/ 107/93	122/ 112/103	177/ 171/140	167/ 156/137	204/ 191/172
Fan Motor Absorbed Power (Heating) High/Medium/Low Speed	W	47/ 38/32	43/ 37/31	59/ 51/43	79/ 75/61	86/ 80/70	90/ 81/70	92/ 85/72	125/ 113/97	138/ 127/106	188/ 179/142	188/ 169/140	229/ 212/181
Net/Gross Weights	kg	15,2/16,7	17,0/18,5	15,7/17,2	21,5/23,4	23,3/25,2	22,3/24,2	25,8/28,0	27,4/29,6	33,6/36,2	34,5/37,1	42,6/45,9	45,6/48,9
Control Type		Wall Mounted Room Thermostat (Optional)											

- 1) External static pressure 0 Pa. 4Y: 4 pipe Y series.
- 2) Supply side 1 m distance and a direction factor of Q=1

* Values are at high speed; 27 °C DB 50 % RH room conditions and 7/12 °C in/out water temperatures.

** Values are at high speed, 20 °C DB room conditions and 90/70 °C water in/out temperatures.

NOTE: All values are based on 0 m altitude and 230 Volt, 50 Hz electrical supply

7.4. GTT/GTA TYPE EC MOTOR 4-PIPE SERIES

UNFC Series	GTT - GTA Types 4 Pipe										
	4M	15	25	30	40	50	60	70	80	100	110
Airflow Rate (Turbo)	m³/h	511	625	982	1044	1133	1270	1580	1664	2104	2312
Airflow Rate (High)	m³/h	462	562	903	951	1044	1162	1435	1518	1931	2109
Airflow Rate (Medium)	m³/h	393	477	796	838	932	1020	1273	1330	1694	1851
Airflow Rate (Low)	m³/h	236	283	548	562	674	707	857	910	1167	1254
Airflow Rate (Silent)	m³/h	183	230	457	498	605	631	757	797	1039	1112
Total Cooling Capacity*	kW	1,94	3,33	4,01	5,57	6,42	7,24	8,66	9,17	11,3	12,53
Sensible Cooling Capacity*	kW	1,59	2,45	3,06	4,08	4,6	5,15	6,26	6,59	8,26	9,08
Additional Heating Capacity**	kW	4,04	4,59	7,5	7,81	8,84	9,88	11,63	12,25	15,85	17,38
Coil Water Volume	L	0,75	1,05	1,06	1,52	1,75	1,89	2,18	2,26	2,83	3,03
Additional Coil Water Volume	L	0,38	0,38	0,54	0,54	0,61	0,66	0,76	0,79	0,98	1,04
DIMENSIONS											
GTT Unit (WxHxD)	mm	709	709	984	984	1101	1024	1359	1411	1771	1882
		238	238	238	238	238	238	238	238	238	238
		478	478	478	478	478	478	478	478	478	478
GTT With Package (WxHxD)	mm	735	735	1015	1015	1150	1240	1455	1455	1790	1915
		260	260	260	260	260	260	260	260	260	260
		515	515	515	515	515	515	515	515	515	515
GTA Unit (WxHxD)	mm	709	709	984	984	1101	1024	1359	1411	1771	1882
		259	259	259	259	259	259	259	259	259	259
		470	470	470	470	470	470	470	470	470	470
GTA With Package (WxHxD)	mm	735	709	1015	1015	1150	1240	1455	1455	1790	1915
		260	260	260	260	260	260	260	260	260	260
		515	515	515	515	515	515	515	515	515	515
Water Flow Rate (Cooling)	L/h	337,8	581,2	699,8	970,1	1117,1	1262,7	1508,7	1597,3	1969	2184,4
Water Pressure Drop	kPa	5,4	21,9	28,2	25,5	37	49,4	36,8	42,1	29,2	37,1
Water Flow Rate (Additional Coil)	L/h	178,2	201,5	330,4	342,9	388,3	433,4	510,6	537,8	696,4	762,9
Water Pressure Drop	kPa	4,7	5,9	19,6	21	29,5	38,5	9,7	11	20,8	25,9
Sound Pressure Level ¹ (Low/Medium/High)	dB (A)	27/37/38	32/41/44	27/40/44	33/41/45	32/40/44	35/43/47	34/41/44	37/47/48	35/3/47	37/44/49
Two-way valve		2VM 2-15/2-15	2VM 2-15/2-15	2VM 2-20/2-15	2VM 2-20/2-15	2VM 2-20/2-15	2VM 2-20/2-15	2VM 2-25/2-20	2VM 2-25/2-20	2VM 2-25/2-20	2VM 2-25/2-20
Three-way valve		4VM 4-15/4-15	4VM 4-15/4-15	4VM 4-20/4-15	4VM 4-20/4-15	4VM 4-20/4-15	4VM 4-20/4-15	4VM 4-21/4-20	4VM 4-21/4-20	4VM 4-21/4-20	4VM 4-21/4-20
Coil In/Out Diameter (Cooling Coil)	inch	3/4									
Coil In/Out Diameter (Additional Heating Coil)	inch	1/2									
Drain Pipe Diameter	inch	3/4									
Fan Motor Absorbed Power (Cooling) Turbo/High/Medium/Low/Silent Speed	W	30/23/ 16/6/5	54/41/ 28/10/6	64/50/ 35/12/8	86/68/ 47/18/11	93/75/ 54/23/16	117/93/ 65/24/16	128/101/ 74/29/20	140/112/ 79/32/22	172/139/ 96/38/25	205/162/ 113/42/27
Fan Motor Absorbed Power (Heating) Turbo/High/Medium/Low/Silent Speed	W	30/24/ 16/6/5	54/42/ 29/10/7	65/51/ 36/12/8	88/70/ 49/18/12	95/76/ 55/24/17	120/95/ 66/25/16	131/104/ 76/30/21	143/114/ 81/33/22	177/142/ 98/40/26	210/166/ 116/44/28
Step Reference Signal - Turbo/High/Medium/Low/Silent	V	10/8/ 6,5/3/2	10/8/ 6,5/3/2	10/8/ 6,5/3/2	10/8/ 6,5/3/2	10/8/ 6,5/3/2	10/8/ 6,5/3/2	10/7,9/ 6,5/3/2	10/8/ 6,5/3/2	10/8/ 6,5/3/2	10/8/ 6,5/3/2
Net/Gross Weights	kg	13,5/15	13,7/15,6	20,7/22,6	21,3/23,2	24,5/26,2	26,2/28,4	31/33,6	31,7/34,3	40,3/43,6	43,5/46,8
Control Type		Wall Mounted Room Thermostat (Optional)									

- 1) External static pressure 0 Pa. 4M: 4 pipe M series.
2) Supply side 1 m distance and a direction factor of Q=1

* Values are at turbo speed, 27 °C DB 50 % RH room conditions and 7/12 °C in/out water temperatures.

** Values are at turbo speed, 20 °C DB room conditions and 90/70 °C water in/out temperatures.

NOTE: All values are based on 0 m altitude and 230 Volt, 50 Hz electrical supply

7.5. GBT/GBA TYPE Y SERIES 2 PIPE

UNFC Series	GBT - GBA Types 2 Pipe												
	2Y	15	20	25	30	35	40	50	60	70	80	100	110
Airflow Rate (High)	m³/h	458	432	508	886	837	923	979	1148	1325	1545	1862	2188
Airflow Rate (Medium)	m³/h	372	350	395	708	673	744	779	938	1064	1270	1498	1834
Airflow Rate(Low)	m³/h	203	192	219	407	389	474	492	509	653	691	954	982
Total Cooling Capacity*	kW	1,25	1,86	2,14	3,35	3,65	3,94	4,6	5,45	6,06	6,94	8,01	9,5
Sensible Cooling Capacity*	kW	1,15	1,44	1,65	2,58	2,77	3	3,38	3,96	4,49	5,13	6,09	7,13
Heating Capacity**	kW	7,21	7,68	8,83	13,65	14,63	15,88	17,21	20,04	23,73	27,19	34,41	39,89
Coil Water Volume	L	1,05	1,35	1,35	1,52	1,98	1,98	2,28	2,47	2,85	2,96	3,72	3,99
DIMENSIONS													
GBT Unit (WxHxD)	mm	709	709	709	984	984	984	1101	1024	1359	1411	1771	1882
		238	238	238	238	238	238	238	238	238	238	238	238
		478	478	478	478	478	478	478	478	478	478	478	478
GBT With Package (WxHxD)	mm	735	735	735	1015	1015	1015	1150	1240	1455	1455	1790	1915
		260	260	260	260	260	260	260	260	260	260	260	260
		515	515	515	515	515	515	515	515	515	515	515	515
GBA Unit (WxHxD)	mm	709	709	709	984	984	984	1101	1024	1359	1411	1771	1882
		259	259	259	259	259	259	259	259	259	259	259	259
		470	470	470	470	470	470	470	470	470	470	470	470
GBA With Package (WxHxD)	mm	735	709	709	1015	1015	1015	1150	1240	1455	1455	1790	1915
		260	260	260	260	260	260	260	260	260	260	260	260
		515	515	515	515	515	515	515	515	515	515	515	515
Water Flow Rate (Cooling)	L/h	123,9	182,2	210	327,6	356	384,3	448,2	531,9	590,7	679,4	782,1	929,2
Water Pressure Drop	kPa	1,3	3,5	4,5	10,5	5,4	6,2	9,3	13,5	8,7	11,5	6,8	9,7
Water Flow Rate (Heating)	L/h	318,2	339	389,4	602,6	646,1	701,2	760,2	884,3	1048	1199,8	1519,9	1761
Water Pressure Drop	kPa	5,7	8,4	10,,9	24,5	12,2	14,2	18,4	25,8	18,7	24,6	17,5	24
Sound Pressure Level² (Low/Medium/High)	dB (A)	22/34/38	26/35/38	32/41/44	27/40/44	29/41/44	33/41/45	32/40/44	33/43/48	34/45/47	37/47/48	35/43/47	36/47/49
Two-way valve		2VM 2-15	2VM 2-15	2VM 2-15	2VM 2-20	2VM 2-20	2VM 2-20	2VM 2-20	2VM 2-20	2VM 2-25	2VM 2-25	2VM 2-25	2VM 2-25
Three-way valve		3VM 4-15	3VM 4-15	3VM 4-15	3VM 4-20	3VM 4-20	3VM 4-20	3VM 4-20	3VM 4-20	3VM 4-21	3VM 4-21	3VM 4-21	3VM 4-21
Pipe Connection Inlet/Outlet	inch	3/4											
Pipe Connection Drainage	inch	3/4											
Fan Motor Absorbed Power (Cooling) High/Medium/Low Speed	W	48/ 42/32	47/ 42/32	64/ 54/41	87/ 77/61	85/ 75/60	94/ 84/68	97/ 86/68	129/ 115/89	141/ 125/100	185/ 164/129	190/ 169/136	247/ 223/177
Fan Motor Absorbed Power (Heating) High/Medium/Low Speed	W	48/ 42/32	47/ 42/32	64/ 54/41	88/ 77/61	85/ 76/60	95/ 84/68	98/ 86/68	130/ 115/89	141/ 125/100	186/ 165/129	190/ 169/136	248/ 224/177
Net/Gross Weights	kg	14,7/16,7	15,5/17,5	15,6/17,6	21,5/23,5	22,7/24,7	22,8/24,8	25,9/27,9	27,5/29,5	33,9/36,9	35,2/38,2	43,1/46,1	45,5/48,5
Control Type		Wall Mounted Room Thermostat (Optional)											
ELECTRIC HEATER OPTION													
Electric Heater Capacity	kW	0,85	0,85	0,85	1,5	1,5	1,5	2,2	2,2	3	3	4	4
Electric Heater Input Current	A	3,7	3,7	3,7	6,5	6,5	6,5	9,6	9,6	13	13	17,4	17,4
Electric Heater Number of Stages		1											

- 1) External static pressure 0 Pa. 2Y: 2 pipe Y series.
- 2) Supply side 1 m distance and a direction factor of Q=1

* Values are at high speed, 24 °C DB, 18 °C YB room conditions and 5,5/14,5 °C in/out water temperatures.

** Values are at high speed, 20 °C DB room conditions and 90/70 °C water in/out temperatures.

*** Electric Heater values are based on 0 m altitude and 230 Volt, 50 Hz electrical supply

7.6. GBT/GBA TYPE EC MOTOR 2 PIPE SERIES

UNFC Series	GBT - GBA Types 2 Pipe										
	2M	15	25	30	40	50	60	70	80	100	110
Airflow Rate (Turbo)	m³/h	517	628	987	1051	1137	1273	1587	1671	2118	2324
Airflow Rate (High)	m³/h	468	565	907	957	1047	1164	1441	1523	1942	2118
Airflow Rate (Medium)	m³/h	398	479	800	842	934	1021	1277	1334	1703	1858
Airflow Rate (Low)	m³/h	236	285	549	565	674	706	857	910	1172	1257
Airflow Rate (Silent)	m³/h	183	231	457	500	605	630	758	796	1044	1114
Total Cooling Capacity*	kW	1,49	2,72	3,88	4,63	5,46	6,24	7,36	7,84	9,4	10,57
Sensible Cooling Capacity*	kW	1,38	2,1	3,02	3,54	4,03	4,55	5,5	5,82	7,17	7,96
Heating Capacity**	kW	8,25	10,88	15,49	18,27	20,13	22,53	28,49	30	39,61	43,46
Coil Water Volume	L	1,05	1,35	1,52	1,98	2,28	2,47	2,85	2,96	3,72	3,99
DIMENSIONS											
GBT Unit (WxHxD)	mm	709	709	984	984	1101	1024	1359	1411	1771	1882
		238	238	238	238	238	238	238	238	238	238
		478	478	478	478	478	478	478	478	478	478
GBT With Package (WxHxD)	mm	735	735	1015	1015	1150	1240	1455	1455	1790	1915
		260	260	260	260	260	260	260	260	260	260
		515	515	515	515	515	515	515	515	515	515
GBA Unit (WxHxD)	mm	709	709	984	984	1101	1024	1359	1411	1771	1882
		259	259	259	259	259	259	259	259	259	259
		470	470	470	470	470	470	470	470	470	470
GBA With Package (WxHxD)	mm	735	709	1015	1015	1150	1240	1455	1455	1790	1915
		260	260	260	260	260	260	260	260	260	260
		515	515	515	515	515	515	515	515	515	515
Water Flow Rate (Cooling)	L/h	145,2	264,1	376,4	449,4	529,4	606,2	713,5	761	913	1027,6
Water Pressure Drop	kPa	1,8	6,8	13,5	8,2	12,5	17,1	12,2	14,2	8,9	11,7
Water Flow Rate (Heating)	L/h	365,3	480,7	685,4	807,9	890,1	995,6	1260,1	1326,4	1751,9	1921,5
Water Pressure Drop	kPa	7,3	16,2	31,2	18,5	24,6	32,1	26,2	29,6	22,7	28,3
Sound Pressure Level ¹ (Low/Medium/High)	dB (A)	22/34/38	32/41/44	27/40/44	33/41/45	32/40/44	33/43/48	34/45/47	37/47/48	35/43/47	36/47/49
Two-way valve		2VM 2-15	2VM 2-15	2VM 2-20	2VM 2-20	2VM 2-20	2VM 2-20	2VM 2-25	2VM 2-25	2VM 2-25	2VM 2-25
Three-way valve		3VM 4-15	3VM 4-15	3VM 4-20	3VM 4-20	3VM 4-20	3VM 4-20	3VM 4-21	3VM 4-21	3VM 4-21	3VM 4-21
Pipe Connection Inlet/Outlet	inch	3/4									
Pipe Connection Drainage	inch	3/4									
Fan Motor Absorbed Power (Cooling) Turbo/High/Medium/ Low/Silent Speed	W	30/24/ 16/6/5	54/42/ 28/10/7	64/51/ 35/12/8	87/69/ 48/18/12	93/75/ 54/24/16	118/93/ 65/24/16	129/102/ 74/29/20	141/113/ 80/32/22	174/140/ 97/39/25	207/164/ 114/43/27
Fan Motor Absorbed Power (Heating) Turbo/High/Medium/ Low/Silent Speed	W	30/23/ 16/6/5	54/41/ 28/10/6	64/50/ 35/12/8	86/68/ 48/18/11	93/75/ 54/24/16	117/93/ 65/24/16	128/101/ 74/29/20	140/112/ 79/32/22	172/138/ 96/38/25	204/162/ 112/42/27
Step Reference Signal - Turbo/ High/Medium/Low/Silent	V	10/8/ 6,5/3/2	10/8/ 6,5/3/2	10/8/ 6,5/3/2	10/8/ 6,5/3/2	10/8/ 6,5/3/2	10/8/ 6,5/3/2	10/7,9/ 6,5/3/2	10/8/ 6,5/3/2	10/8/ 6,5/3/2	10/8/ 6,5/3/2
Net/Gross Weights	kg	13/15	13,7/15,7	20,8/22,8	21,9/23,9	24,7/26,7	26,5/28,5	31,5/34,5	31,9/34,9	41,1/44,1	43,7/46,7
Control Type		Wall Mounted Room Thermostat (Optional)									
Electric Heater Capacity	kW	0,85	0,85	1,5	1,5	2,2	2,2	3	3	4	4
Electric Heater Input Current	A	3,7	3,7	6,5	6,5	9,6	9,6	13	13	17,4	17,4
Electric Heater Number of Stages		1									

- 1) External static pressure 0 Pa. 2M: 2 pipe M series.
 2) Supply side 1 m distance and a direction factor of Q=1

* Values are at high speed, 24 °C DB, 18 °C YB room conditions and 5,5/14,5 °C in/out water temperatures.

** Values are at high speed, 20 °C DB room conditions and 90/70 °C water in/out temperatures.

*** Electric Heater values are based on 0 m altitude and 230 Volt, 50 Hz electrical supply

7.7. GBT/GBA TYPE Y SERIES 4 PIPE

UNFC Series	GTT - GTA Types 4 Pipe												
	4Y	15	20	25	30	35	40	50	60	70	80	100	110
Airflow Rate (High)	m³/h	439	415	486	841	796	876	937	1107	1259	1467	1769	2088
Airflow Rate (Medium)	m³/h	355	335	380	676	645	713	752	922	1017	1228	1438	1786
Airflow Rate(Low)	m³/h	194	184	210	390	374	457	476	492	692	665	920	948
Total Cooling Capacity*	kW	1,22	1,79	2,06	3,23	3,5	3,78	4,46	5,31	5,83	6,68	7,7	9,18
Sensible Cooling Capacity*	kW	1,11	1,39	1,58	2,48	2,66	2,87	3,27	3,85	4,3	4,92	5,84	6,87
Additional Heating Capacity**	kW	3,43	3,31	3,66	6,33	6,12	6,49	7,28	8,41	9,39	10,53	13,21	15,12
Coil Water Volume	L	1,05	1,35	1,35	1,52	1,98	1,98	2,28	2,47	2,85	2,96	3,72	3,99
Additional Coil Water Volume	L	0,38	0,38	0,38	0,54	0,54	0,54	0,61	0,66	0,76	0,79	0,98	1,04
DIMENSIONS													
GTT Unit (WxHxD)	mm	709	709	709	984	984	984	1101	1024	1359	1411	1771	1882
		238	238	238	238	238	238	238	238	238	238	238	238
		478	478	478	478	478	478	478	478	478	478	478	478
GTT With Package (WxHxD)	mm	735	735	735	1015	1015	1015	1150	1240	1455	1455	1790	1915
		260	260	260	260	260	260	260	260	260	260	260	260
		515	515	515	515	515	515	515	515	515	515	515	515
GTA Unit (WxHxD)	mm	709	709	709	984	984	984	1101	1024	1359	1411	1771	1882
		259	259	259	259	259	259	259	259	259	259	259	259
		470	470	470	470	470	470	470	470	470	470	470	470
GTA With Package (WxHxD)	mm	735	709	709	1015	1015	1015	1150	1240	1455	1455	1790	1915
		260	260	260	260	260	260	260	260	260	260	260	260
		515	515	515	515	515	515	515	515	515	515	515	515
Water Flow Rate (Cooling)	L/h	121	175,4	202,1	316,2	341,9	368,9	433,8	518	568,3	654,1	751,8	897,5
Water Pressure Drop	kPa	1,3	3,3	4,2	9,9	5,1	5,8	8,7	12,9	8,1	10,8	6,3	9,1
Water Flow Rate (Additional Coil)	L/h	150,1	145	159,6	277,4	268,3	284,3	319,2	367,8	410,7	459,5	578,3	661
Water Pressure Drop	kPa	3,4	3,2	3,9	14,2	13,4	14,9	20,5	28,4	6,5	8,2	14,7	19,9
Sound Pressure Level ² (Low/Medium/High)	dB (A)	27/37/38	26/35/38	32/41/44	27/40/44	29/41/44	33/41/45	32/40/44	35/43/47	34/41/44	37/47/48	35/43/47	37/44/49
Two-way valve		2VM 2-15/2-15	2VM 2-15/2-15	2VM 2-15/2-15	2VM 2-20/2-15	2VM 2-20/2-15	2VM 2-20/2-15	2VM 2-20/2-15	2VM 2-20/2-15	2VM 2-25/2-20	2VM 2-25/2-20	2VM 2-25/2-20	2VM 2-25/2-20
Three-way valve		4VM 4-15/4-15	4VM 4-15/4-15	4VM 4-15/4-15	4VM 4-20/4-15	4VM 4-20/4-15	4VM 4-20/4-15	4VM 4-20/4-15	4VM 4-20/4-15	4VM 4-21/4-20	4VM 4-21/4-20	4VM 4-21/4-20	4VM 4-21/4-20
Coil In/Out Diameter (Cooling Coil)	inch	3/4											
Coil In/Out Diameter (Additional Heating Coil)	inch	1/2											
Drain Pipe Diameter	inch	3/4											
Fan Motor Absorbed Power (Cooling) High/Medium/Low Speed	W	48/ 42/32	46/ 41/32	63/ 53/41	85/ 76/60	83/ 74/60	92/ 82/67	95/ 84/68	124/ 112/88	137/ 123/99	179/ 160/128	184/ 165/134	237/ 216/176
Fan Motor Absorbed Power (Heating) High/Medium/Low Speed	W	48/ 42/32	47/ 41/32	63/ 54/41	86/ 76/61	84/ 75/60	93/ 84/68	97/ 85/68	128/ 114/89	140/ 124/100	183/ 163/129	188/ 168/135	243/ 221/177
Net/Gross Weights	kg	16/18	17,8/19,8	16,5/18,5	22,9/25,8	24,8/26,8	23,8/25,8	27,4/29,4	29,2/31,2	35,7/38,7	36,7/39,7	45,4/48,4	48,7/51,7
Control Type		Wall Mounted Room Thermostat (Optional)											

- 1) External static pressure 0 Pa. 4Y: 4 pipe Y series.
- 2) Supply side 1 m distance and a direction factor of Q=1

* Values are at high speed, 24 °C DB, 18 °C YB room conditions and 5,5/14,5 °C in/out water temperatures.

** Values are at high speed, 20 °C DB room conditions and 90/70 °C water in/out temperatures.

NOTE: All values are based on 0 m altitude and 230 Volt, 50 Hz electrical supply

7.8. GBT/GBA TYPE EC MOTOR 4-PIPE SERIES

UNFC Series	GTT - GTA Types 4 Pipe										
	4M	15	25	30	40	50	60	70	80	100	110
Airflow Rate (Turbo)	m³/h	489	599	916	981	1072	1207	1485	1568	1980	2184
Airflow Rate (High)	m³/h	440	537	840	892	986	1104	1346	1427	1814	1989
Airflow Rate (Medium)	m³/h	373	454	732	783	878	967	1190	1247	1586	1740
Airflow Rate (Low)	m³/h	220	268	491	547	621	655	785	836	1088	1152
Airflow Rate (Silent)	m³/h	171	217	409	507	554	579	692	728	1055	1020
Total Cooling Capacity*	kW	1,41	2,62	3,68	4,39	5,23	6,01	7,01	7,49	8,94	10,1
Sensible Cooling Capacity*	kW	1,31	2,02	2,85	3,35	3,85	4,37	5,22	5,54	6,79	7,57
Additional Heating Capacity**	kW	3,93	4,47	7,19	7,52	8,54	9,57	11,2	11,82	15,27	16,79
Coil Water Volume	L	1,05	1,35	1,52	1,98	2,28	2,47	2,85	2,96	3,72	3,99
Additional Coil Water Volume	L	0,38	0,38	0,54	0,54	0,61	0,66	0,76	0,79	0,98	1,04
DIMENSIONS											
GTT Unit (WxHxD)	mm	709	709	984	984	1101	1024	1359	1411	1771	1882
		238	238	238	238	238	238	238	238	238	238
		478	478	478	478	478	478	478	478	478	478
GTT With Package (WxHxD)	mm	735	735	1015	1015	1150	1240	1455	1455	1790	1915
		260	260	260	260	260	260	260	260	260	260
		515	515	515	515	515	515	515	515	515	515
GTA Unit (WxHxD)	mm	709	709	984	984	1101	1024	1359	1411	1771	1882
		259	259	259	259	259	259	259	259	259	259
		470	470	470	470	470	470	470	470	470	470
GTA With Package (WxHxD)	mm	735	709	1015	1015	1150	1240	1455	1455	1790	1915
		260	260	260	260	260	260	260	260	260	260
		515	515	515	515	515	515	515	515	515	515
Water Flow Rate (Cooling)	L/h	137,3	254,3	356,9	426,3	506,9	583,4	680,1	726,7	867,3	980,9
Water Pressure Drop	kPa	1,6	6,4	12,3	7,5	11,5	15,9	11,2	13	8,1	10,7
Water Flow Rate (Additional Coil)	L/h	173,4	196,3	316,5	330,2	375,3	420,2	491,9	518,8	670,9	736,9
Water Pressure Drop	kPa	4,5	5,7	18,1	19,6	27,7	36,3	9,1	10,3	19,4	24,3
Sound Pressure Level ² (Low/Medium/High)	dB (A)	27/37/38	32/41/44	27/40/44	33/41/45	32/40/44	35/43/48	34/41/44	37/47/48	35/43/47	37/44/49
Two-way valve		2VM 2-15/2-15	2VM 2-15/2-15	2VM 2-20/2-15	2VM 2-20/2-15	2VM 2-20/2-15	2VM 2-20/2-15	2VM 2-25/2-20	2VM 2-25/2-20	2VM 2-25/2-20	2VM 2-25/2-20
Three-way valve		4VM 4-15/4-15	4VM 4-15/4-15	4VM 4-20/4-15	4VM 4-20/4-15	4VM 4-20/4-15	4VM 4-20/4-15	4VM 4-21/4-20	4VM 4-21/4-20	4VM 4-21/4-20	4VM 4-21/4-20
Coil In/Out Diameter (Cooling Coil)	inch	3/4									
Coil In/Out Diameter (Additional Heating Coil)	inch	1/2									
Drain Pipe Diameter	inch	3/4									
Fan Motor Absorbed Power (Cooling) Turbo/High/Medium/Low/Silent Speed	W	29/23/ 16/6/4	52/40/ 27/9/6	60/47/ 33/11/8	81/65/ 45/18/12	88/71/ 51/22/15	111/88/ 62/23/15	121/97/ 70/27/19	132/107/ 75/30/20	163/132/ 91/36/27	193/154/ 107/40/25
Fan Motor Absorbed Power (Heating) Turbo/High/Medium/Low/Silent Speed	W	29/23/ 16/6/4	52/41/ 28/10/6	62/48/ 34/11/8	84/67/ 46/17/10	90/73/ 53/23/16	114/91/ 64/24/16	125/99/ 72/28/20	136/110/ 77/32/21	168/136/ 94/38/24	199/159/ 110/41/26
Step Reference Signal - Turbo/High/Medium/Low/Silent	V	10/8/ 6,5/3/2	10/8/ 6,5/3/2	10/8/ 6,5/3/2	10/8/ 6,5/3/2	10/8/ 6,5/3/2	10/8/ 6,5/3/2	10/7,9/ 6,5/3/2	10/8/ 6,5/3/2	10/8/ 6,5/3/2	10/8/ 6,5/3/2
Net/Gross Weights	kg	14,3/16,3	14,5/17,5	22,1/25,1	22,8/25,8	26,1/28,1	28/30	33,1/36,1	33,9/36	43,1/46,1	46,6/52,6
Control Type		Wall Mounted Room Thermostat (Optional)									

- 1) External static pressure 0 Pa. 4M: 4 pipe M series.
- 2) Supply side 1 m distance and a direction factor of Q=1

* Values are at high speed, 24 °C DB, 18 °C YB room conditions and 5,5/14,5 °C in/out water temperatures.

** Values are at high speed, 20 °C DB room conditions and 90/70 °C water in/out temperatures.

NOTE: All values are based on 0 m altitude and 230 Volt, 50 Hz electrical supply

7.9. CABINET AND HIDDEN WALL TYPE MODEL WITH 2 PIPES

UNFC Series	KDT-KYT-KTP-KTT-GDT 2 Pipe												
	2	15	20	25	30	35	40	50	60	70	80	100	110
Airflow Rate (High)	m³/h	347	327	468	694	661	808	819	1147	1092	1404	1500	1826
Airflow Rate (Medium)	m³/h	268	252	367	545	520	653	647	938	861	1036	1199	1474
Airflow Rate(Low)	m³/h	152	142	195	358	339	375	410	504	533	667	769	931
Total Cooling Capacity*	kW	1,47	1,89	2,35	2,96	3,62	4,08	4,97	5,21	6,15	7,22	8	9,16
Sensible Cooling Capacity*	kW	1,14	1,32	1,67	2,14	2,53	2,88	3,38	3,75	4,27	5,06	5,49	6,33
Heating Capacity**	kW	5,16	5,47	6,52	8,11	10,06	11,19	12,58	15,83	16,41	19,47	22,22	25,67
Coil Water Volume	L	0,86	1,19	1,19	1,22	1,73	1,73	2,28	2,28	2,83	2,83	3,37	3,37
DIMENSIONS													
KDT Unit (WxHxD)	mm	850	850	850	1110	1110	1110	1370	1370	1630	1630	1890	1890
		545	545	545	545	545	545	545	545	545	545	545	545
		231	231	231	231	231	231	231	231	231	231	231	231
KDT With Package (WxHxD)	mm	885	885	885	1145	1145	1145	1405	1405	1695	1695	1955	1955
		560	560	560	560	560	560	560	560	560	560	560	560
		250	250	250	250	250	250	250	250	250	250	250	250
GDT Unit (WxHxD)	mm	647	647	647	907	907	907	1167	1167	1427	1427	1687	1687
		513	513	513	513	513	513	513	513	513	513	513	513
		221	221	221	221	221	221	221	221	221	221	221	221
GDT With Package (WxHxD)	mm	880	880	880	1140	1140	1140	1400	1400	1690	1690	1950	1950
		570	570	570	570	570	570	570	570	570	570	570	570
		260	260	260	260	260	260	260	260	260	260	260	260
Water Flow Rate (Cooling)	L/h	256,7	329,5	411,9	516,2	629,5	710,1	862,9	909,7	1069,1	1260,7	1394,8	1594,8
Water Pressure Drop	kPa	3,9	11,6	16,8	21,7	16,8	21,6	38,3	11,7	18,7	25,4	37,7	47,9
Water Flow Rate (Heating)	L/h	226,6	241,6	287,4	357,9	444,2	474,3	556,1	698,8	752,2	859,6	981,2	1134
Water Pressure Drop	kPa	2,3	5	7,6	10,5	7,2	9,6	14,6	6,5	7,7	11	15,4	19,1
Sound Pressure Level¹ (Low/Medium/High)	dB (A)	21/32/34	23/33/35	28/38/42	29/36/38	29/35/36	33/40/43	30/37/40	33/44/46	34/45/48	35/46/48	34/42/46	39/47/48
Two-way valve		2VM 2-15	2VM 2-15	2VM 2-15	2VM 2-20	2VM 2-20	2VM 2-20	2VM 2-20	2VM 2-20	2VM 2-25	2VM 2-25	2VM 2-25	2VM 2-25
Three-way valve		3VM 4-15	3VM 4-15	3VM 4-15	3VM 4-20	3VM 4-20	3VM 4-20	3VM 4-20	3VM 4-20	3VM 4-21	3VM 4-21	3VM 4-21	3VM 4-21
Pipe Connection Inlet/Outlet	inch	3/4											
Pipe Connection Drainage	mm	20											
Fan Motor Absorbed Power (Cooling) High/Medium/Low Speed	W	30/ 28/24	30/ 28/24	52/ 43/32	58/ 52/44	57/ 51/44	69/ 64/56	66/ 54/43	117/ 106/82	91/ 77/61	144/ 125/98	152/ 118/91	164/ 139/111
Fan Motor Absorbed Power (Heating) High/Medium/Low Speed	W	31/ 28/24	31/ 30/27	55/ 46/34	62/ 55/49	61/ 55/48	73/ 68/57	71/ 58/46	115/ 105/82	96/ 82/65	143/ 125/97	151/ 118/91	159/ 142/117
Net/Gross Weights	kg	20,6/23,6	21,2/24,2	21,2/24,2	26,9/29,9	27,8/30,8	28,8/31,8	31,7/35,7	33,4/37,4	41,5/45,5	42,5/46,5	50,6/54,6	52,9/56,9
Control Type		Wall Mounted Room Thermostat (Optional)											

1) Supply side 1 m distance and a direction factor of Q=1

* Values are at high speed, 27 °C DB 50 % RH room conditions and 7/12 °C in/out water temperatures.

** Values are at high speed, 20 °C DB room conditions and 90/70 °C water in/out temperatures.

NOTE: All values are based on 0 m altitude and 230 Volt, 50 Hz electrical supply

7.10. CABINET AND HIDDEN WALL TYPE MODEL EC MOTOR WITH 2 PIPES

UNFC Series	KDT-KYT-KTP-KTT-GDT 2 Pipe								
	2E	15	25	30	40	50	60	80	110
Airflow Rate (Turbo)	m³/h	380	545	731	889	879	1258	1523	1993
Airflow Rate (High)	m³/h	348	471	699	814	819	1148	1410	1857
Airflow Rate (Medium)	m³/h	269	368	545	658	649	933	1037	1482
Airflow Rate (Low)	m³/h	154	196	369	374	421	508	668	913
Airflow Rate (Silent)	m³/h	126	148	354	366	382	472	619	829
Total Cooling Capacity*	kW	1,59	3,01	3,34	5	5,77	6,73	8,76	11,57
Sensible Cooling Capacity*	kW	1,25	2,15	2,43	3,54	3,94	4,87	6,16	8,03
Heating Capacity**	kW	5,1	8,45	9,66	13,86	14,76	19,48	24,1	31,3
Coil Water Volume	L	0,86	1,19	1,22	1,73	2,28	2,28	2,83	3,37
DIMENSIONS									
KDT Unit (WxHxD)	mm	850	850	1110	1110	1370	1370	1630	1890
		545	545	545	545	545	545	545	545
		231	231	231	231	231	231	231	231
KDT With Package (WxHxD)	mm	885	885	1145	1145	1405	1405	1695	1955
		560	560	560	560	560	560	560	560
		250	250	250	250	250	250	250	250
GDT Unit (WxHxD)	mm	647	647	907	907	1167	1167	1427	1687
		513	513	513	513	513	513	513	513
		221	221	221	221	221	221	221	221
GDT With Package (WxHxD)	mm	880	880	1140	1140	1400	1400	1690	1950
		570	570	570	570	570	570	570	570
		260	260	260	260	260	260	260	260
Water Flow Rate (Cooling)	L/h	276,4	523,9	580,3	870,9	998	1178	1524,3	2015,2
Water Pressure Drop	kPa	4,3	20,6	23	23,9	38,6	14,6	27,6	52,6
Water Flow Rate (Heating)	L/h	225,6	373,2	427,5	612,3	653,2	859,6	1064,8	1382,3
Water Pressure Drop	kPa	2,3	8,8	10,2	9,8	13,6	6,4	11	20,2
Sound Pressure Level ¹ (Low/Medium/High)	dB (A)	20/31/33	27/37/41	28/35/37	32/39/42	29/36/39	32/43/45	34/45/47	38/46/47
Two-way valve		2VM 2-15	2VM 2-15	2VM 2-20	2VM 2-20	2VM 2-20	2VM 2-20	2VM 2-25	2VM 2-25
Three-way valve		3VM 4-15	3VM 4-15	3VM 4-20	3VM 4-20	3VM 4-20	3VM 4-20	3VM 4-21	3VM 4-21
Pipe Connection Inlet/Outlet	inch	3/4							
Pipe Connection Drainage	mm	20							
Fan Motor Absorbed Power (Cooling) Turbo/High/Medium/Low/Silent Speed	W	18/14/ 9/4/4	44/32/ 18/6/4	40/31/ 18/7/6	73/56/ 34/9/7	51/42/ 23/8/6	131/99/ 57/11/9	127/102/ 49/18/14	178/145/ 82/25/18
Fan Motor Absorbed Power (Heating) Turbo/High/Medium/Low/Silent Speed	W	18/14/ 9/4/4	44/32/ 18/6/4	40/32/ 18/7/6	74/57/ 34/9/7	52/42/ 24/8/7	132/100/ 57/11/9	128/103/ 50/18/14	181/147/ 84/25/18
Step Reference Signal - Turbo/High/Medium/Low/Silent	V	10/8,1/ 5,9/3,2/2,6	10/7,9/ 6,2/3,3/2,4	10/8,1/ 6,0/3,3/2,8	10/8,1/ 6,3/3/2,6	10/8,1/ 5,9/3,1/2,6	10/8,2/ 6,5/3/2,5	10/8,2/ 5,9/3,4/2,7	10/8,0/ 6,0/3/2,0
Net/Gross Weights	kg	19,2/22,2	19,8/22,8	26,5/29,5	28,4/31,4	31,3/35,3	33/37	40,7/44,7	52,1/56,1
Control Type		Wall Mounted Room Thermostat (Optional)							

1) Supply side 1 m distance and a direction factor of Q=1

* Values are at high speed, 27 °C DB 50 % RH room conditions and 7/12 °C in/out water temperatures.

** Values are at high speed, 20 °C DB room conditions and 90/70 °C water in/out temperatures.

NOTE: All values are based on 0 m altitude and 230 Volt, 50 Hz electrical supply

7.11. CABINET AND HIDDEN WALL TYPE MODEL WITH 4 PIPES

UNFC Series	KDT-KYT-KTP-KTT-GDT 4 Pipe												
	4	15	20	25	30	35	40	50	60	70	80	100	110
Airflow Rate (High)	m³/h	326	309	443	655	627	761	785	1100	1037	1332	1422	1723
Airflow Rate (Medium)	m³/h	251	238	349	518	497	621	622	920	821	991	1140	1409
Airflow Rate(Low)	m³/h	143	135	186	334	322	358	395	487	511	641	736	896
Total Cooling Capacity*	kW	1,38	1,93	2,29	2,86	3,58	4,21	4,93	5,17	6,16	7,04	7,93	8,94
Sensible Cooling Capacity*	kW	1,07	1,34	1,61	2,07	2,49	2,96	3,34	3,71	4,26	4,91	5,43	6,17
Ek Batarya Kapasitesi**	kW	2,41	2,51	2,99	4,9	4,82	5,4	6,4	7,75	7,99	9,19	10,45	11,57
Coil Water Volume	L	0,86	1,19	1,19	1,22	1,73	1,73	2,28	2,28	2,83	2,83	3,37	3,37
Additional Coil Water Volume	L	0,35	0,35	0,35	0,5	0,5	0,5	0,64	0,64	0,79	0,79	0,93	0,93
DIMENSIONS													
KDT Unit (WxHxD)	mm	850	850	850	1110	1110	1110	1370	1370	1630	1630	1890	1890
		545	545	545	545	545	545	545	545	545	545	545	545
		231	231	231	231	231	231	231	231	231	231	231	231
KDT With Package (WxHxD)	mm	885	885	885	1145	1145	1145	1405	1405	1695	1695	1955	1955
		560	560	560	560	560	560	560	560	560	560	560	560
		250	250	250	250	250	250	250	250	250	250	250	250
GDT Unit (WxHxD)	mm	647	647	647	907	907	907	1167	1167	1427	1427	1687	1687
		513	513	513	513	513	513	513	513	513	513	513	513
		221	221	221	221	221	221	221	221	221	221	221	221
GDT With Package (WxHxD)	mm	880	880	880	1140	1140	1140	1400	1400	1690	1690	1950	1950
		570	570	570	570	570	570	570	570	570	570	570	570
		260	260	260	260	260	260	260	260	260	260	260	260
Water Flow Rate (Cooling)	L/h	241,7	336,4	401,6	500,6	622,3	732,9	856,3	903	1072,8	1230,6	1383,4	1559,6
Water Pressure Drop	kPa	4,1	11,1	15,3	20	15,7	20,2	36,3	11,5	18,2	23,5	33,9	44,6
Water Flow Rate (Heating)	L/h	105,7	110,2	130,3	215,1	211,4	236,9	281,5	339,1	350,8	401,7	457,9	507
Water Pressure Drop	kPa	2,4	2,1	3	9,4	9,7	11,3	20,2	27,7	6,2	10,1	13,1	13,7
Sound Pressure Level ¹ (Low/Medium/High)	dB (A)	20/31/35	24/33/36	28/38/44	29/37/41	29/36/47	33/40/44	31/37/41	35/46/48	35/46/47	36/47/49	35/43/44	38/46/47
Two-way valve		2VM 2-15/2-15	2VM 2-15/2-15	2VM 2-15/2-15	2VM 2-20/2-15	2VM 2-20/2-15	2VM 2-20/2-15	2VM 2-20/2-15	2VM 2-20/2-15	2VM 2-25/2-20	2VM 2-25/2-20	2VM 2-25/2-20	2VM 2-25/2-20
Three-way valve		4VM 4-15/4-15	4VM 4-15/4-15	4VM 4-15/4-15	4VM 4-20/4-15	4VM 4-20/4-15	4VM 4-20/4-15	4VM 4-20/4-15	4VM 4-20/4-15	4VM 4-21/4-20	4VM 4-21/4-20	4VM 4-21/4-20	4VM 4-21/4-20
Coil In/Out Diameter (Cooling Coil)	inch	3/4											
Coil In/Out Diameter (Additional Heating Coil)	inch	1/2											
Drain Pipe Diameter	mm	20											
Fan Motor Absorbed Power (Cooling) Turbo/High/Medium/Low/ Silent Speed	W	33/ 28/25	31/ 28/26	59/ 48/36	58/ 52/45	56/ 52/44	70/ 65/56	66/ 54/43	114/ 102/77	102/ 85/67	151/ 133/103	150/ 113/89	169/ 139/110
Fan Motor Absorbed Power (Heating) Turbo/High/ Medium/ LowSilent Speed	W	32/ 29/25	32/ 29/25	62/ 51/38	62/ 55/46	60/ 55/46	76/ 69/57	70/ 57/46	119/ 103/78	103/ 87/68	159/ 134/107	153/ 116/88	166/ 146/113
Net/Gross Weights	kg	23,2/26,2	23,8/26,8	23,8/26,8	30,3/33,3	31,2/34,2	32,2/35,2	36/40	37,7/41,7	46,6/50,6	47,6/51,6	56,5/60,5	58,8/62,8
Control Type		Wall Mounted Room Thermostat (Optional)											

1) Supply side 1 m distance and a direction factor of Q=1

* Values are at high speed, 27 °C DB 50 % RH room conditions and 7/12 °C in/out water temperatures.

** Values are at high speed, 20 °C DB room conditions and 90/70 °C water in/out temperatures.

NOTE: All values are based on 0 m altitude and 230 Volt, 50 Hz electrical supply

7.12. CABINET AND HIDDEN WALL TYPE MODEL EC MOTOR WITH 4 PIPES

UNFC Series	KDT-KYT Types 4 Pipe								
	4E	15	25	30	40	50	60	80	110
Airflow Rate (Turbo)	m³/h	345	502	642	799	809	1167	1393	1809
Airflow Rate (High)	m³/h	315	431	603	729	754	1064	1288	1683
Airflow Rate (Medium)	m³/h	244	337	460	582	580	861	931	1333
Airflow Rate (Low)	m³/h	140	179	308	327	370	446	586	837
Airflow Rate (Silent)	m³/h	115	136	295	314	336	418	546	716
Total Cooling Capacity*	kW	1,49	2,84	3,07	4,64	5,42	6,39	8,23	10,82
Sensible Cooling Capacity*	kW	1,16	2,02	2,22	3,27	3,69	4,6	5,77	7,48
Heating Capacity**	kW	2,74	3,46	5,07	5,82	6,75	8,51	10,15	13,04
Coil Water Volume	L	0,86	1,19	1,22	1,73	2,28	2,28	2,83	3,37
Additional Coil Water Volume	L	0,35	0,35	0,5	0,5	0,64	0,64	0,79	0,93
DIMENSIONS									
KDT Unit (WxHxD)	mm	850	850	1110	1110	1370	1370	1630	1890
		545	545	545	545	545	545	545	545
		231	231	231	231	231	231	231	231
KDT With Package (WxHxD)	mm	885	885	1145	1145	1405	1405	1695	1955
		560	560	560	560	560	560	560	560
		250	250	250	250	250	250	250	250
GDT Unit (WxHxD)	mm	647	647	907	907	1167	1167	1427	1687
		513	513	513	513	513	513	513	513
		221	221	221	221	221	221	221	221
GDT With Package (WxHxD)	mm	880	880	1140	1140	1400	1400	1690	1950
		570	570	570	570	570	570	570	570
		260	260	260	260	260	260	260	260
Water Flow Rate (Cooling)	L/h	257,9	494,2	532,7	807,1	938,5	1116,4	1431,4	1883,5
Water Pressure Drop	kPa	3,8	18,5	19,7	20,8	34,5	13,3	24,6	46,5
Water Flow Rate (Heating)	L/h	121,1	152,1	223,6	255,3	297,8	372,5	445,6	571,7
Water Pressure Drop	kPa	2,1	3,3	8,9	11,3	18,7	28,5	7,8	13,9
Sound Pressure Level ¹ (Low/Medium/High)	dB (A)	19/30/34	27/37/43	28/36/40	32/39/43	30/36/40	34/45/47	35/46/48	37/45/46
Two-way valve		2VM 2-15/2-15	2VM 2-15/2-15	2VM 2-20/2-15	2VM 2-20/2-15	2VM 2-20/2-15	2VM 2-20/2-15	2VM 2-25/2-20	2VM 2-25/2-20
Three-way valve		4VM 4-15/4-15	4VM 4-15/4-15	4VM 4-20/4-15	4VM 4-20/4-15	4VM 4-20/4-15	4VM 4-20/4-15	4VM 4-21/4-20	4VM 4-21/4-20
Coil In/ Out Diameter (Cooling Coil)	inch	3/4							
Coil In/ Out Diameter (Additional Heating Coil)	inch	1/2							
Drain Pipe Diameter	mm	20							
Fan Motor Absorbed Power (Cooling) Turbo/High/ Medium/ Low/Silent Speed	W	17/13/8/ 3/3	41/30/17 /6/3	36/28/16 /6/5	67/52/31 /8/6	47/39/ 22/7/6	121/91/ 53/10/8	117/95/ 45/17/13	161/134/ 76/23/16
Fan Motor Absorbed Power (Heating) Turbo/High/Medium/LowSilent Speed	W	17/14/9 /3/4	42/31/18 /6/4	37/29/16 /6/5	69/54/32 /8/6	49/40/ 22/8/6	125/94/5 4/10/8	121/98/ 47/17/13	169/139/ 79/24/17
Step Reference Signal - Turbo/High/Medium/Low/Silent	V	10/8,1/5,9/ 3,2/2,6	10/7,9/6,2/ 3,3/2,4	10/8,1/6,0/ 3,3/2,8	10/8,1/6,3/ 3/2,6	10/8,1/5,9/ 3,1/2,6	10/8,2/6,5/ 3/2,5	10/8,2/5,9/ 3,4/2,7	10/8,0/6,0/ 3/2,0
Net/Gross Weights	kg	21,8/24,8	22,4/25,4	29,9/32,9	31,8/34,8	35,6/39,6	37,3/41,3	45,8/49,8	58/62
Control Type		Wall Mounted Room Thermostat (Optional)							

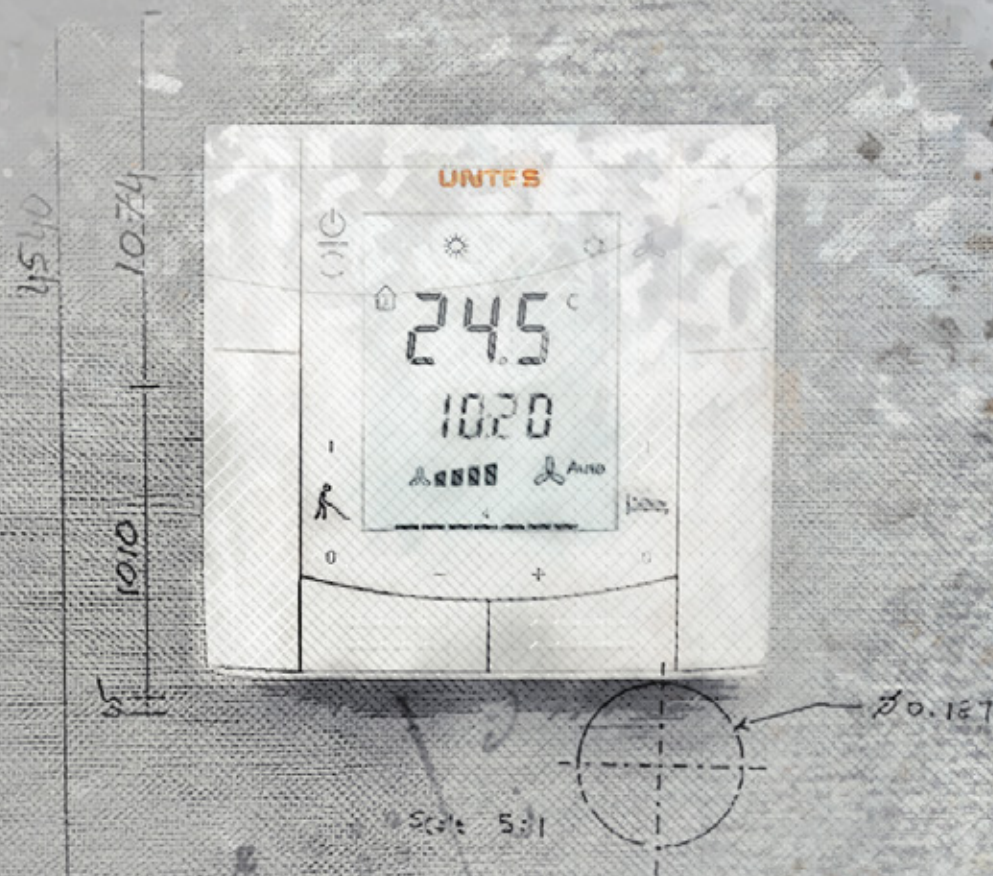
1) Supply side 1 m distance and a direction factor of Q=1

* Values are at high speed, 27 °C DB 50 % RH room conditions and 7/12 °C in/out water temperatures.

** Values are at high speed, 20 °C DB room conditions and 90/70 °C water in/out temperatures.

NOTE: All values are based on 0 m altitude and 230 Volt, 50 Hz electrical supply





cold



hot



08

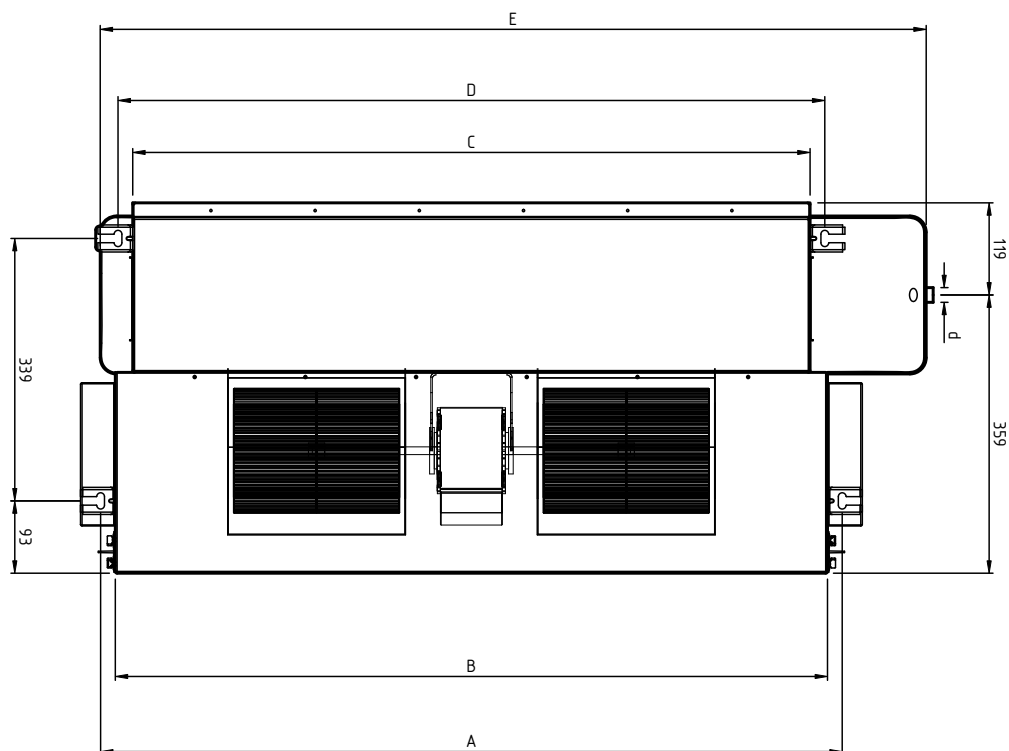
DIMENSIONS

8.1. DIMENSIONS FOR HIDDEN CEILING TYPE

(Rear Inlet / Front Supply)

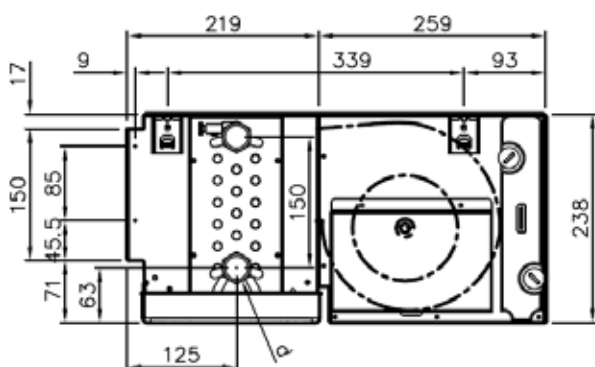
Top view measurement scheme for hidden type fan coil unit with 2 and 4 pipes;

2-4 Pipes

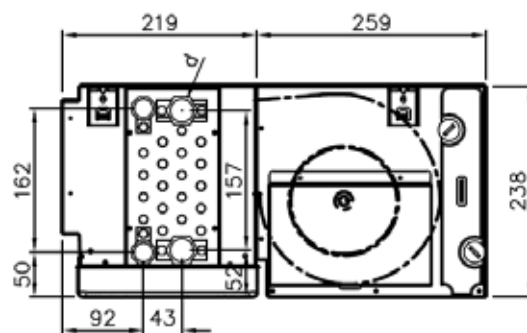


Side view for hidden type fan coil unit with;

2 Pipes



4 Pipes



not

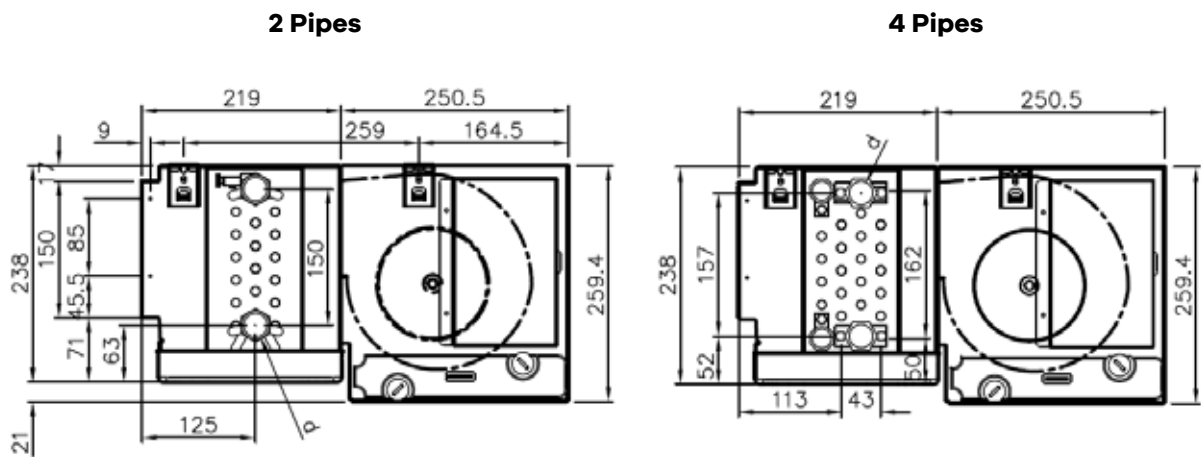
MODEL

(Bottom Inlet / Front Supply)

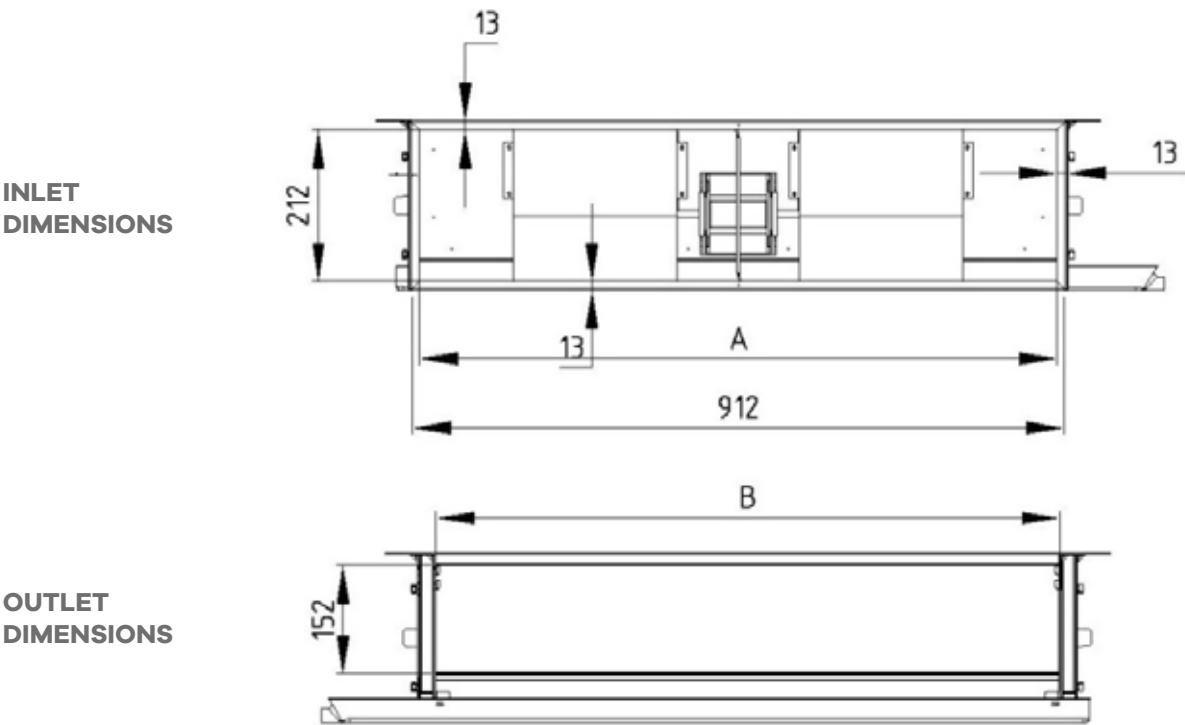
2-4 Pipes



Side view for concealed ceiling fan coil unit;

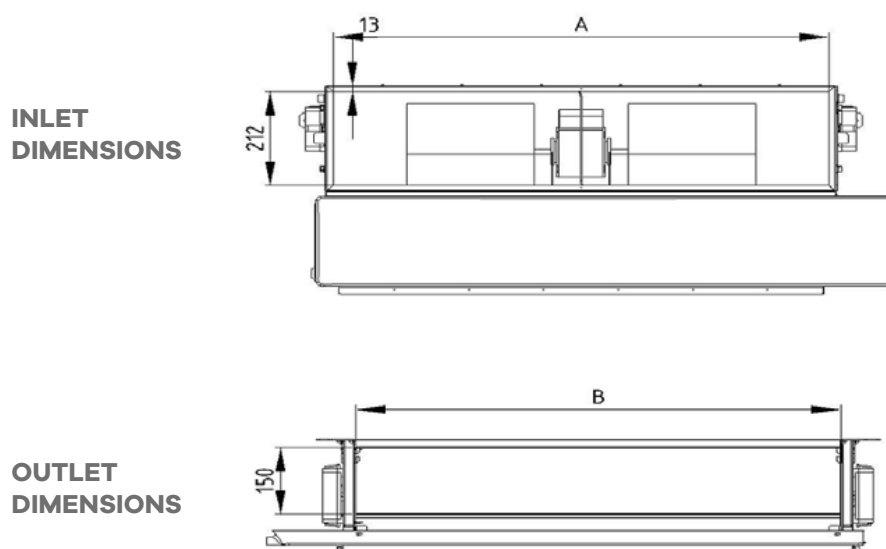


8.3.INLET&OUTLET DIMENSIONS OF GTT/GBT



MODEL GTT/GBT	15-20-25	30-35-40	50	60	70	80	100	110
A (mm)	479	759	894	979	1149	1199	1539	1659
B (mm)	460	740	875	960	1130	1180	1520	1640

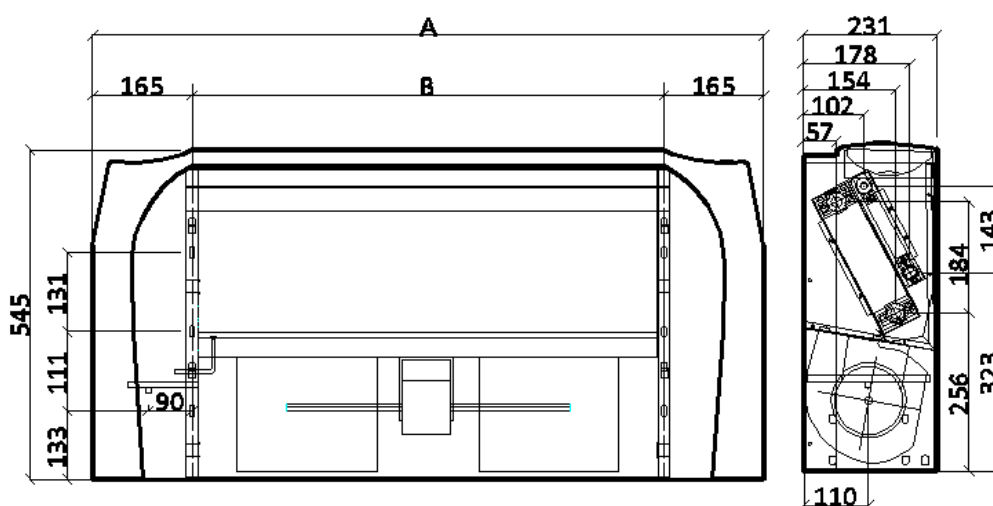
8.4. INLET&OUTLET DIMENSIONS OF GTA/GBA



MODEL GTA/GBA	15-20-25	30-35-40	50	60	70	80	100	110
A (mm)	479	759	894	979	1149	1199	1539	1659
B (mm)	460	740	875	960	1130	1180	1520	1640

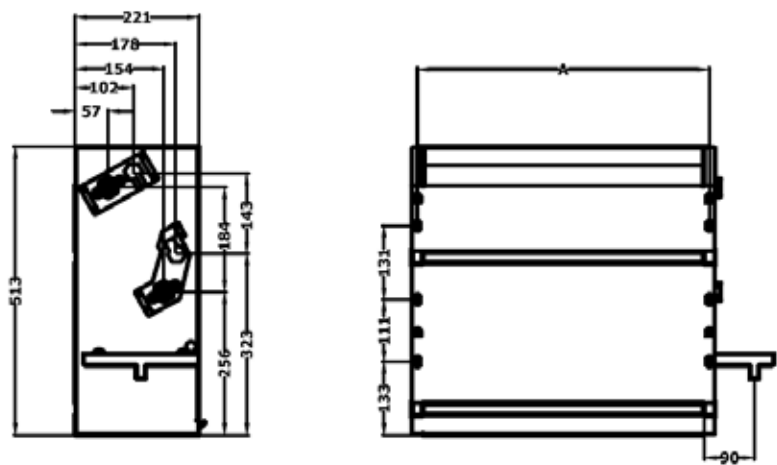
8.5. DIMENSIONS OF CABINET TYPE & GDT TYPE

Front and side view measurement schemes for cabinet type fancoil unit with 2 and 4 pipes;



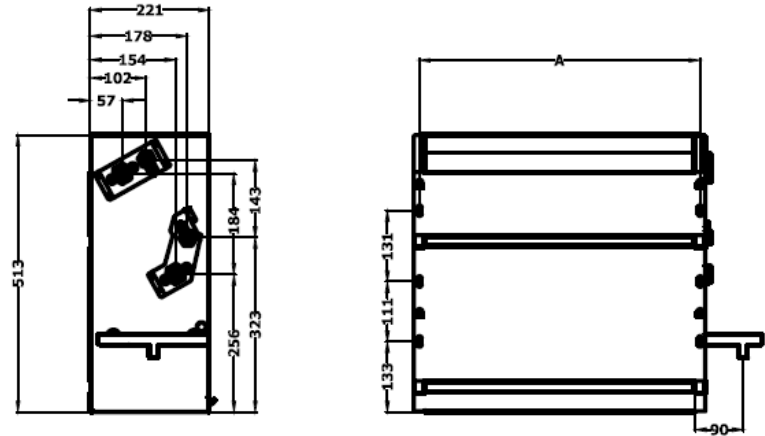
KDT	15-20-25	30-35-40	50-60	70-80	100-110
A [mm]	850	1110	1370	1630	1890
B [mm]	520	780	1040	1300	1560
Boru	coil in/out and drain diameter 3/4"				
	add. coil in/out diameter 3/4"				

Front and side view measurement schemes for GDT type fancoil unit with 2 pipes;



GDT	15-20-25	30-35-40	50-60	70-80	100-110
A [mm]	520	780	1040	1300	1560
Pipe	coil in/out and drain diameter 3/4"				
	add. coil in/out diameter 3/4"				

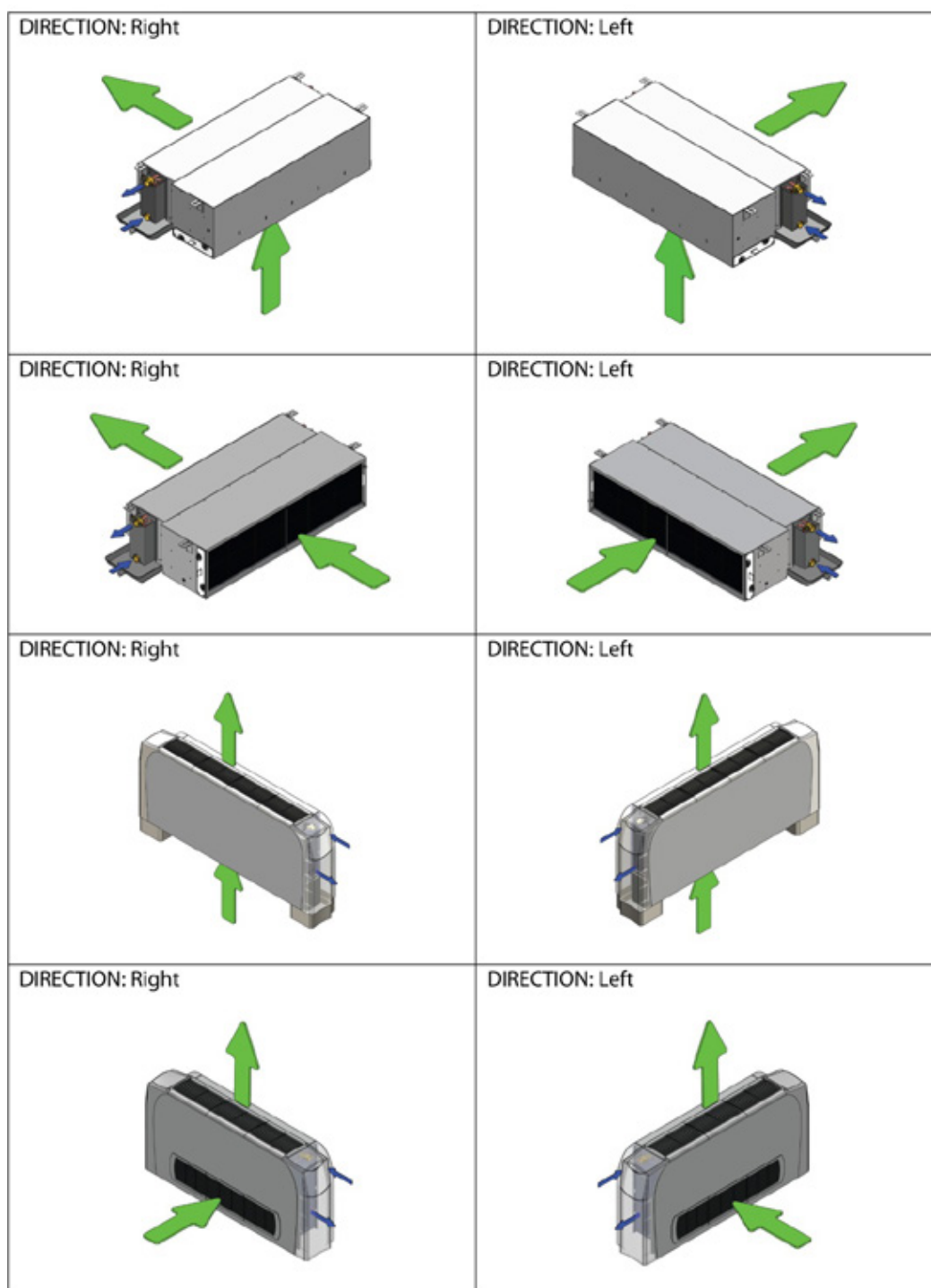
Front and side view measurement schemes for GDT type fancoil unit with 4 pipes;





GDT	15-20-25	30-35-40	50-60	70-80	100-110
A [mm]	520	780	1040	1300	1560
Pipe	coil in/out and drain diameter 3/4"				
	add. coil in/out diameter 3/4"				

09

DIRECTION INFORMATION



-  Air Flow Direction
-  Heater/Cooler Fluid Connection Direction



EXPORT SALES OFFICE

Address: 53th Main Street 1450th Street Ulusoy Plaza No: 9/50
Cukurambar, **Ankara, Turkey**
T+90 (312) 287 91 00 **F**+90 (312) 284 91 00
Email: export@untes.com.tr

MANUFACTURING PLANT-1

Air Handling & Ventilations Systems
Fan Coil Systems
Packaged Air Conditioning Systems
Address: Istanbul Road 37th km
Kahramankazan, **Ankara, Turkey**

MANUFACTURING PLANT-2

Water Chiller and Heat Pumps
Address: Istanbul Road 24th km
Saraykoy, **Ankara, Turkey**

www.untes.com |     untesklima

Untes Heating Air Conditioner Inc. reserves the right to make changes in the products, technical data, figures, designs and materials of the products in the catalog without any notice or information. All contents are copyrighted by Untes.

